

MZX-LED Series LED Fluorescence Illuminator



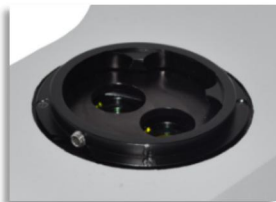
MZX-BG-LED series LED fluorescent illuminator is self-researched by Micro-shot company. It is designed to upgrade stereo microscope to fluorescent functional. The LED illuminator integrates filters cubes and light source in one unit, switch fluorescence observation and bright field observation by wheel. What is more, it keeps original stereo microscope optical performance no matter depth of field or field of view. Stereo fluorescent microscope is ideal for scientific laboratory GFP and in vivo experiment such as zebrafish, nematodes, fruit flies and other fluorescent microscopy fields.

Features

- Compact design contains light source and filters in one unit.
- Instant on-off, no need waiting of pre-heating or cooling.
- Digital screen shows light intensity 0~100%
- Remember light intensity of each color light source.
- Light source synchronous switching with filter groups.
- No requirement of external or added power supply.
- Turret wheel control different color lighting
- CE, FCC, EMC, EU, ISO certified.

Applications:

In vitro
Model organism
Zebrafish
Nematodes
C. elegans
Drosophila
Seed screening
TransGene



Double lighting professional for stereo microscope
Precision-cast flange well matched different microscope
Allen driver lock device for stable working



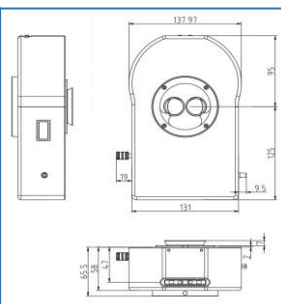
Accurate turret wheel control different color lighting
Lighting lamp change simultaneously
Laser printing mark



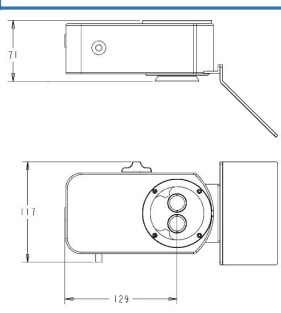
Lever control LED selection
Avoid specimen fluorescence reduction from lighting
Space to paste mark



Show light intensity
Remember the light intensity of each color
Brightness 0~100% continuously adjustable



MZX-BG-LED
Two colors model
BG two excitation groups



MZX-B-LED
Single color excitation model
B excitation group
(It's optional with G and U)



MZX-BGU-LED
Three colors excitation model
BGU excitation group



Olympus SZX7 with MZX-BG-ED

Specification

Types	Item No.	Excitation groups	Filter Groups	Compatible microscopes
Two colors	MZX-BG-LED	BG	BG	Olympus SZX Nikon SMZ Leica M Zeiss V/Discovery/SV Sunny SZX12 Motic SZM7
Three colors	MZX-BGU-LED	BGU	BGU	
Single color	MZX-B-LED	B	B	

Standard LED lamp and Filters

Model	LED lamp	Filter wavelength			Mainly Applied Fluorochrome
	Color	Excitation filter	Dichroic mirror	Emission filter	
B	Blue	475/40nm	505nmLP	525/45nm	GFP/ FITC /EGFP
G	Green	530/40nm	570nmLP	590nmLP	PI / EB / EH /TRITC
	Yellow	560/40nm	600nmLP	610nmLP	Mcherry/TexasRed/Alexa Fluor 594
U	Violet	400/40nm	430nmLP	460nmLP	CFP/part of DAPI
Light source	Blue: 6W LED for each filter group, 3W per LED lamp Green: 12W LED for each filter group, 6W per LED lamp Yellow: 10W for each filter group: 5W per LED lamp Violet:6W LED for each filter group, 3W per LED lamp				
Observation	Fluorescence Bright field from microscope original light				
Screen	MZX-BG-LED and MZX-BGU-LED has digital screen show light intensity and remember light intensity of each color light source				
Operation	MZX-BG-LED : Turret, B, G, UV/O (for transmitted bright field) MZX-BGU-LED: Turret, B,G, U, O(for transmitted bright field) MZX-B-LED: Slider, B, O(for transmitted bright field)				
Power control	Rota-table knob, continuously adjustable brightness				
Input power	DC 12V 2A				
Shell	High rigid precision-cast aluminium with coating and vents				
Light baffle	Orange color plastic light baffle				

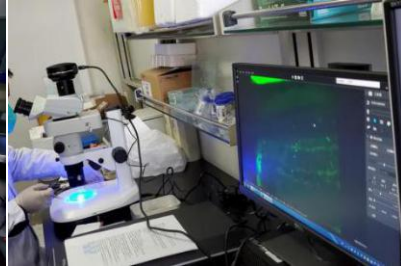
Optional LED lamp and Filters

LED	Filter type	Excitation filter	Dichroic mirror	Emission filter
Blue	Long-pass	460-490nm	>500nm	510nmLP
Green	Band-pass	475/40nm	>500nm	535/45nm
Yellow	Band-pass	560/40nm	600nmLP	635/60nm
UV	Long-pass	355/50nm	410nmLP	420nmLP

Cases



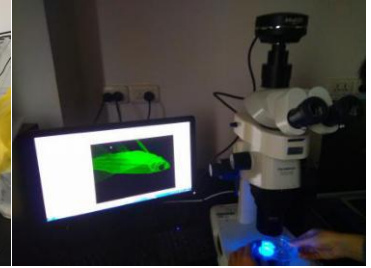
Olympus SZX7



Olympus SZX7



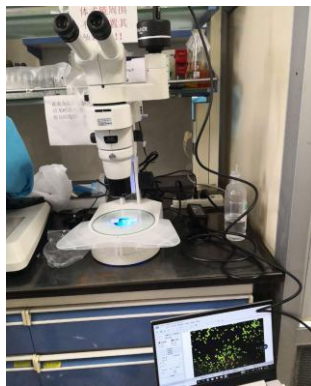
Olympus SZX10



Olympus SZX16



Nikon SZM18



Nikon SMZ800N



Leica M205C



Leica M6



Leica M8



Zeiss V8



Zeiss V8

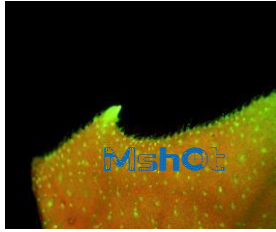


Zeiss V8

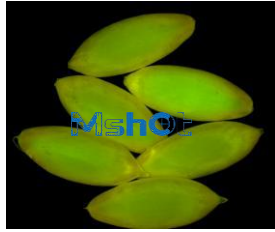


Zeiss V8

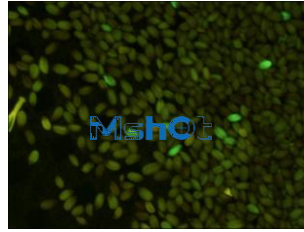
TransGene Plants



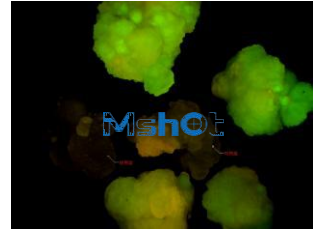
Leaf



Cucumber seed

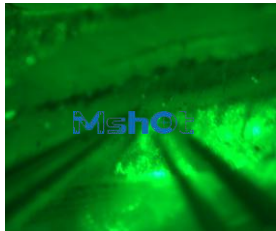


Rice seed



GFP seed

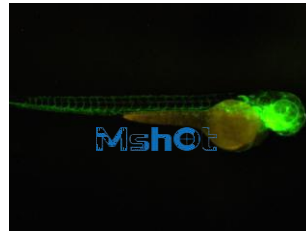
Zebrafish



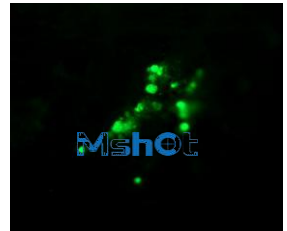
Clip follicle



Zebrafish egg

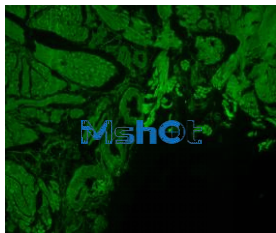


Grown zebrafish

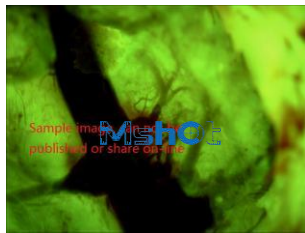


Zebrafish cell

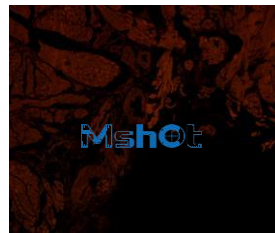
Little mouse



Intestine



Heart thrombus



Intestine

Drosophila



Drosophila



Young worm



Fruit fly

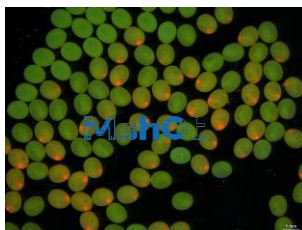
C.elegant



Worm



Worm egg



Silkworm eggs