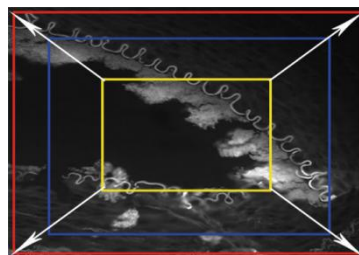
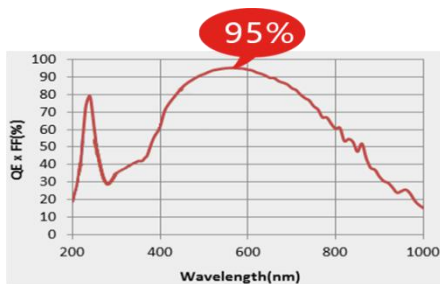


MSH20 - Back lighting camera



MSH20 is a monochrome camera in super sensitivity, it has 95% QE quantum efficiency to get faster speed and excellent noise radio, spectral response is from 200nm to 1300nm, optional with cooling, all the features make the camera is superior on microscope imaging, and outstanding when applied to life science, spectral analysis, astronomical observation and other advanced technology research area.



2 inch sensor field view is super wide

Features:

- Semiconductor cooling mode/ Not cooling
- 95% QE quantum efficiency
- Backlighting technology 2" sony sensor
- Monochrome camera 4.2 megapixels
- Pixel size 11 $\mu\text{m} \times 11 \mu\text{m}$
- 22fps at full resolution, max 29fps
- Full well capacity 93Ke-
- Rolling shutter
- Dynamic range >93dB
- Read out noise 1.47e-
- Spectral range 200nm~1100nm
- Support DirectShow and Twain
- Can offer 16bit color image with software

Applications:

- Weak fluorescence
- Weak light signal capture
- Semiconductor
- UV light capture
- Live cell imaging
- Flow cytometry
- Chemiluminescence
- FRET
- FISH
- DIC
- NIR

Item	MSH20	
Type	Monochrome	
Effective megapixels	4.2 megapixels	
Sensor size	2inch	
Pixel size	11 $\mu\text{m} \times 11 \mu\text{m}$	
Resolution and frame rate	2048 \times 2048	24fps
	Any size of ROI	
Exposure time	0.021ms ~ 20s	
Dynamic range	>93dB	
Full well capacity	93Ke-	
Read out noise	1.47e-	
Spectral wavelength	200nm ~ 1100nm	
Shutter type	Electronic rolling Shutter	
Cooling mode (optional)	Semiconductor cooling mode/ Not cooling	
Exposure function	Manual exposure / Auto exposure / Zone exposure	



Guangzhou Micro-shot Technology Co., Ltd.

Image format	TIF, BMP,JPG,RAW
Software data	DirectShow / TWAIN
Operating system	Windows XP 32Bit, Windows 7/8/10 32/64Bit
Data port	USB3.0 B type port, 5Gbps
Camera port	Standard C mount
Power supply	USB 5V electrical supply
Working temperature	Working temperature: 0 ~ 50°C ; Working humidity: 10% ~ 85%RH
Size	105 x 105 x 92 mm