



MS23 is a scientific CMOS camera developed by MSHOT. It adopts large area sony sensor and USB3.0 data port, high sensitivity and high speed with wide field view. The camera quite suitable for weak fluorescence imaging, also fit to microscopy applications of pathology and phase contrast.

Features:

- High sensitivity
- Global shutter
- Wide field of view
- Fast working speed

Specification

Item	MS23	A/D convert	12bit
Effective resolution	2.3 megapixels	Image cache	64Mb
Sensor size	1/1.2"	Trigger	Software
Pixel size	5.86μm × 5.86μm	Exposure	Manual / Auto / Area
Frame rate	40fps @ 1920 × 1200	White balance	Auto/ One push / Area
	40fps @ 1920 × 1080	Image format	TIF,BMP,JPG,RAW
	40fps @ 960 × 600 (SUM2)	Software port	DirectShow / TWAIN
	Any size ROI	OS	Windows XP 32Bit,Windows 7/8/10 32/64Bit,Linux
Scan mode	Progress/Continues	Data port	USB3.0 B type, 5Gb/s
Shutter	Global shutter	Camera port	C-mount adapter
Exposure time	20μs - 42s	Power supply	USB 5V power
Effective gain	1 – 100x	Working	Temperature: 0 - 50°C; Humidity: 10% - 90%RH
Spectral response	380 - 1100nm	Shell size	Ø76 × 65.6mm

Guangzhou Micro-shot Optical Technology Co. Ltd

Address: Room506, Lobby A, Vanke Cloud / Guangzhou City / China
 www.m-shot.com / sales@m-shot.com / 0086-20-38262481

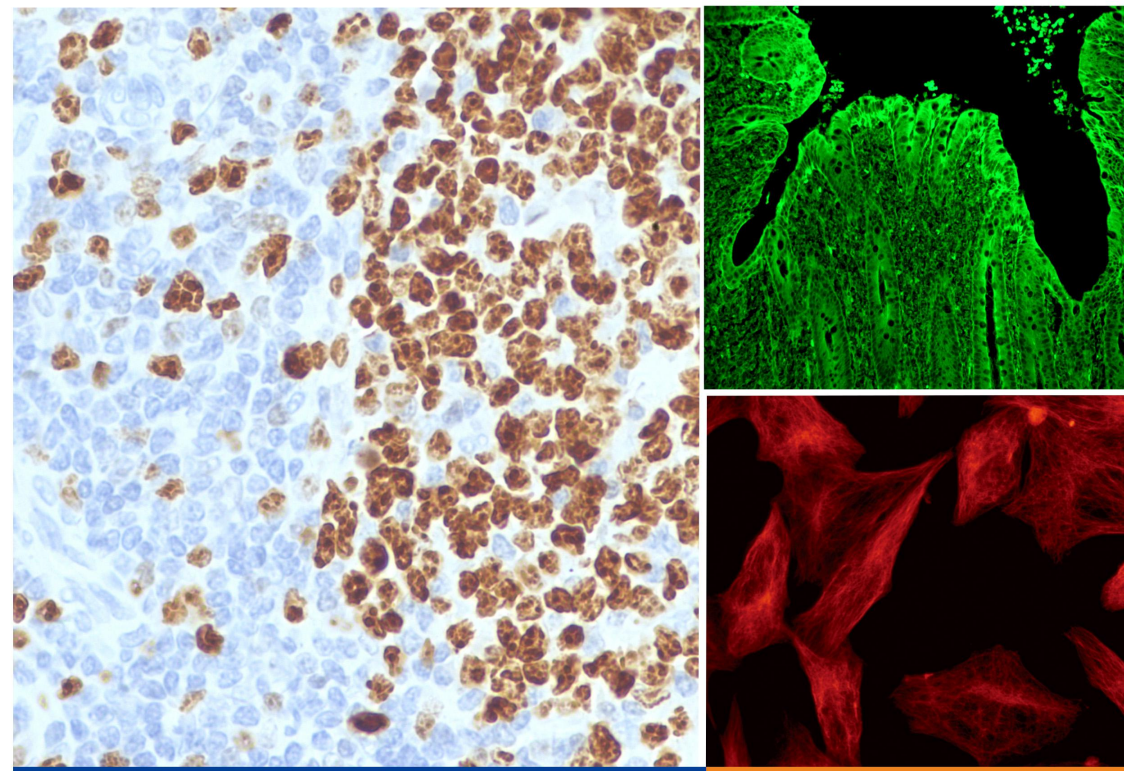


Mshot

Microscope Digital Camera

MS23

Smart Imaging for Great Discoveries



Fluorescence Microscope Camera

