

Mshot

Digital Imaging Analysis System

www.m-shot.com
sales@mshot.com

Main Function list

Featured functions

Burst
Timelapse
Smart Denoise
Counting point
Anti-fliker: 50Hz, 60Hz
System logs & account control
Dynamic multi-images merge
Connect 4 cameras ones time
Auto image splicing
Auto extend depth of field

Fluorescence imaging

Histogram
Maximum & Minimum value
RGB channel
Input levels & Output levels
Dynamic multi-image merge
Merge channels
Shifting correction
Split RGB channel
Quickly RGB dye
Line profile
Graying

Image Capture & Video

Exposure controls: Auto exposure, Exposure time, Global & Regional exposure, Gain, Overexposure correction

Color adjustment: Automatic white balance, Global & Regional white balance, Monochrome, Invert, RGB separate adjustment, Saturation

Resolution: Preview resolution& Capture resolution, ROI
Frame rate : Normal speed, high speed
Image Flip : Horizontal, Vertical
Image color depth: 8bit, 12bit (16bit for FIT image)

Imaging processing

Dynamic: Gamma, Contrast, Sharpness, Denoise
Static: Brightness, Contrast, Color phase, Saturation, Gamma, Smart brightness
Color adjustment: Automatic white balance, Global & Regional white balance, Monochrome, Invert, RGB separate adjustment, Saturation

Measurement & Calibration

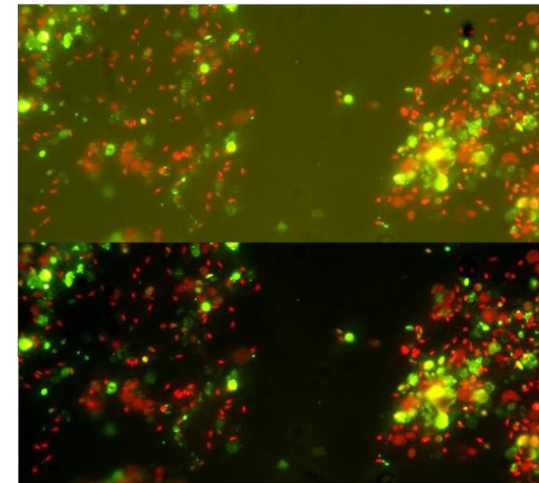
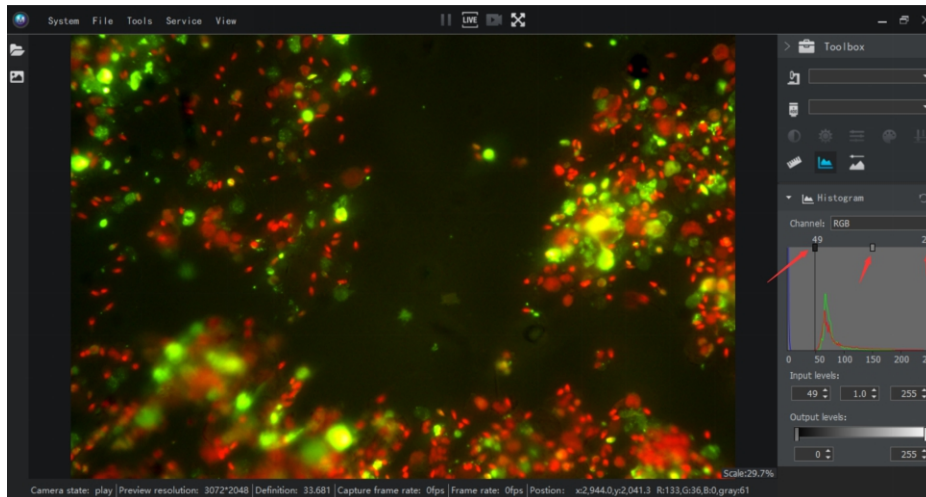
Text, Counting point, Straight Line, Segment Line, Rectangle, Polygon, Angle, Ellipse, Circle, Diameter Circle , Perimeter Circle, Parallel Line, Arrow, Scale Bar, Line Profile, Scale bar

Export data to Excel

Max. & Min. value adjustment

- Adjust Maximum value and Minimum value makes fluorescence image more pure by darker background and higher contrast fluorescence.

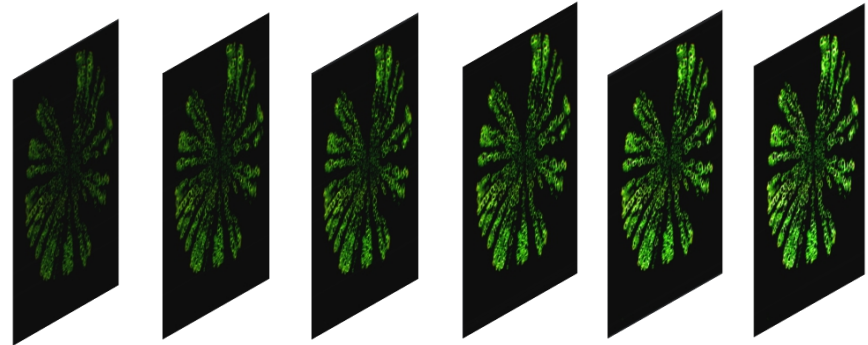
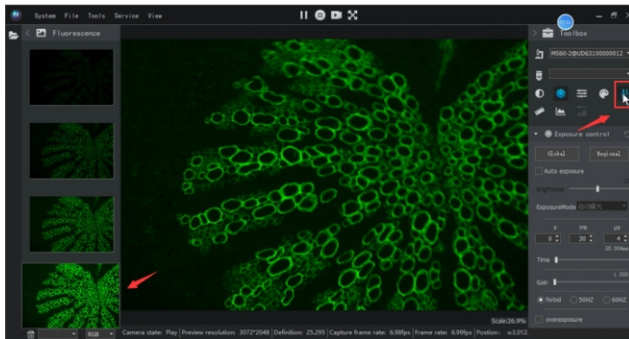
Before



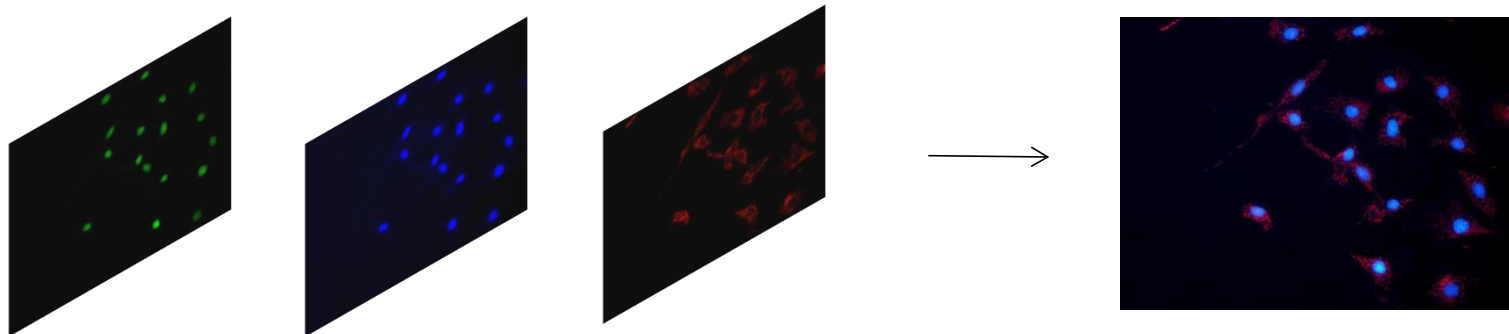
After

Dynamic Overlay & Merge Multi-Images

- Merging max. 7 different exposure images to one better image, reduce image noise (improve SNR) / to enhance fluorescence brightness.

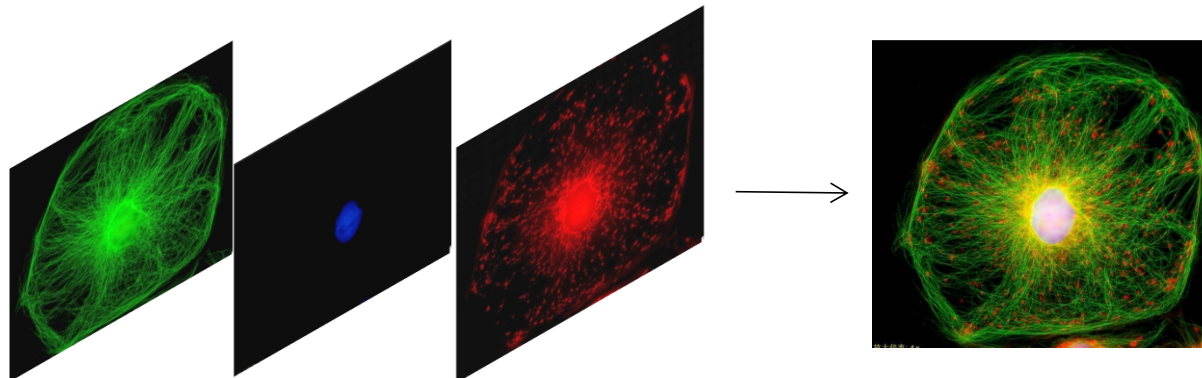
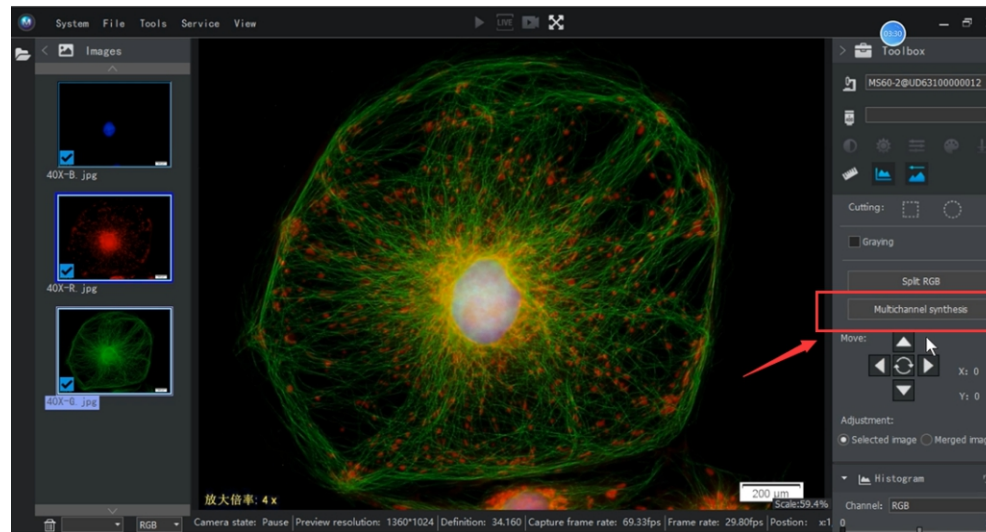


- Merging different channel simple fluorescence images under live.



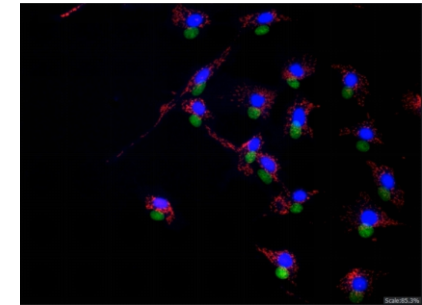
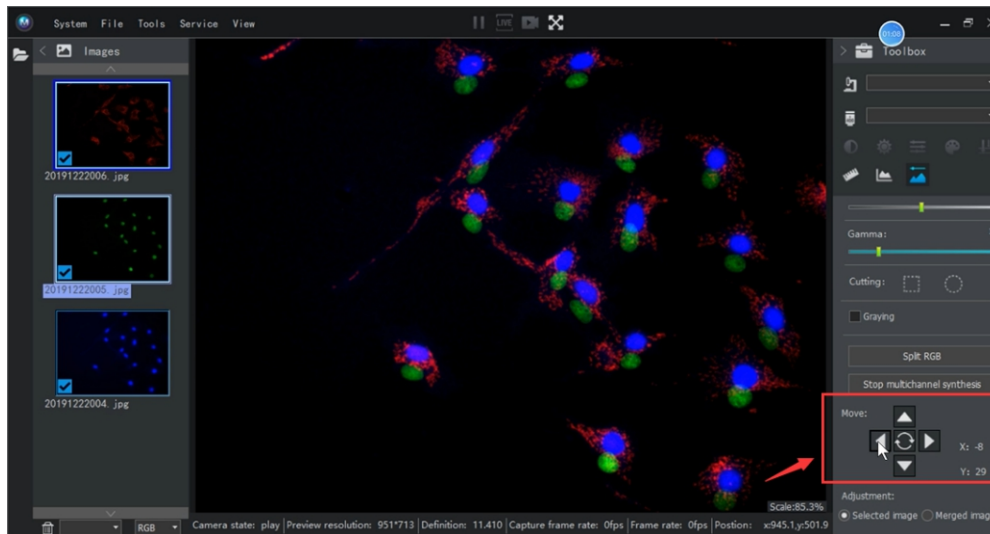
Merge Channels

- Merge different color fluorescence images into a multi-color fluorescence image.

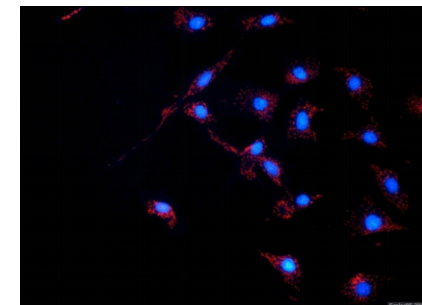


Shifting correction

- Different fluorescence dye images of one specimen might be out of original position because external move and microscope quality, we call it shifting, the tool can move any image position you want to correct shifting.



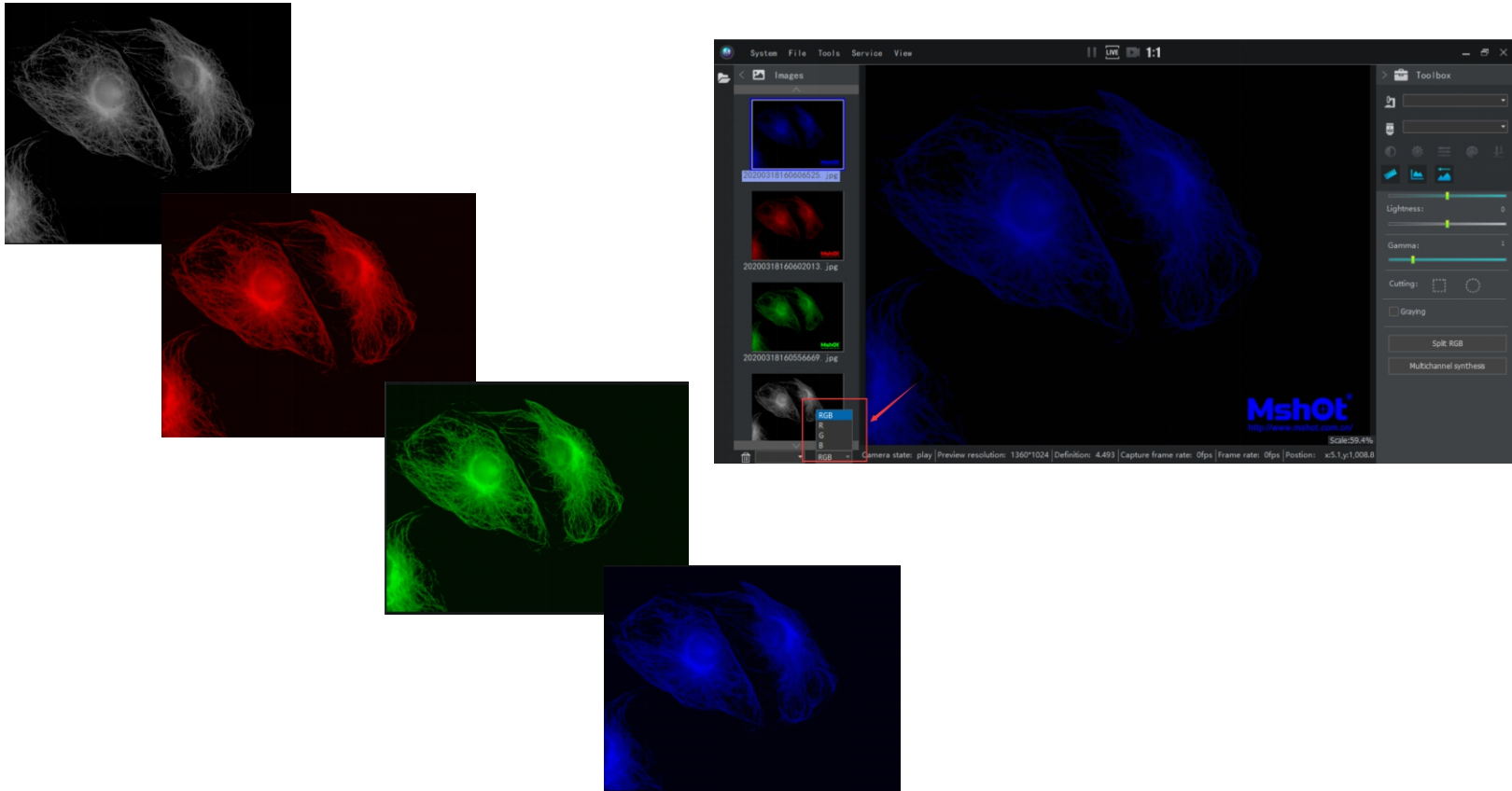
Before



After

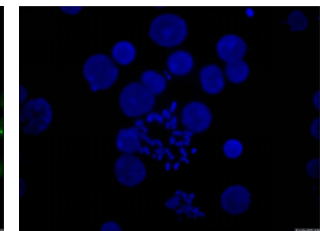
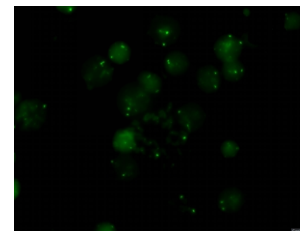
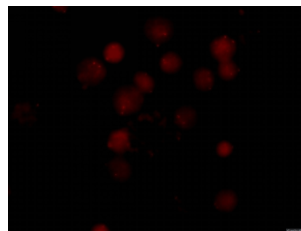
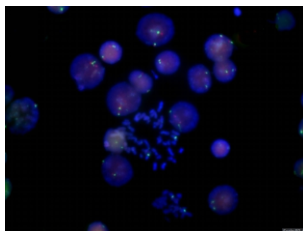
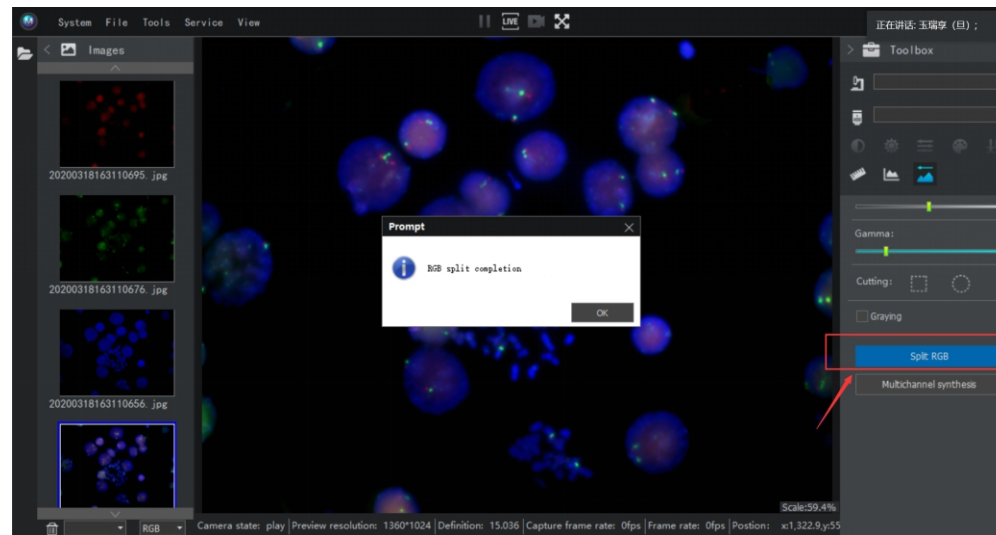
Quickly dye

- Just choose R/G/B channel to dye the monochrome fluorescence image for quickly observation.



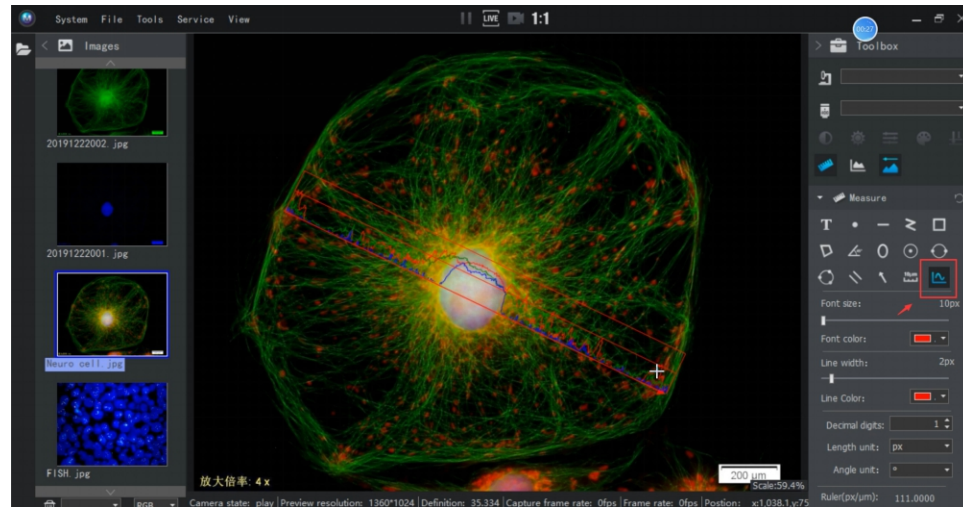
Split RGB

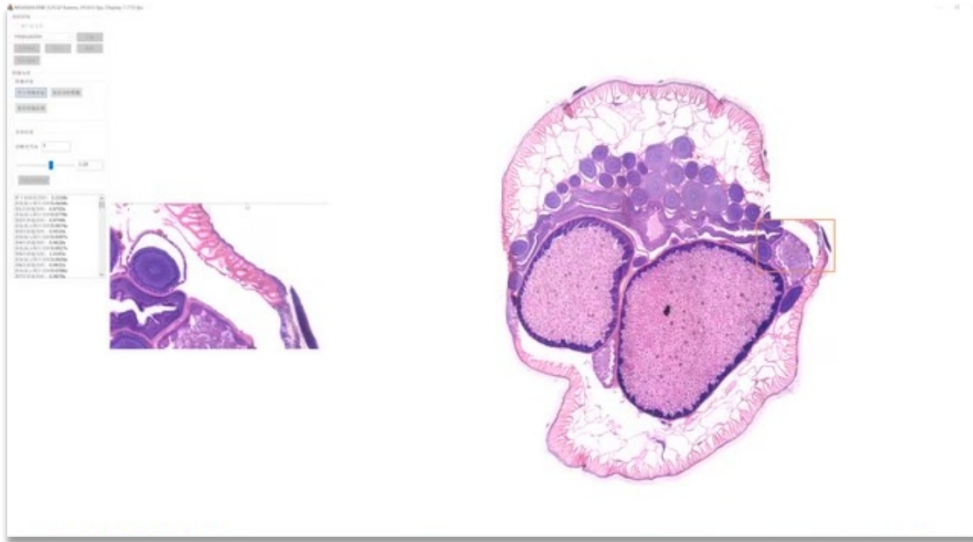
- One-push split a multi-channel fluorescence image into single channel images by Red, Green and Blue to quickly separate different fluorescence signal.



Line profile

- Show light intensity of different specimen area.





Auto image splicing



Auto extend depth of field