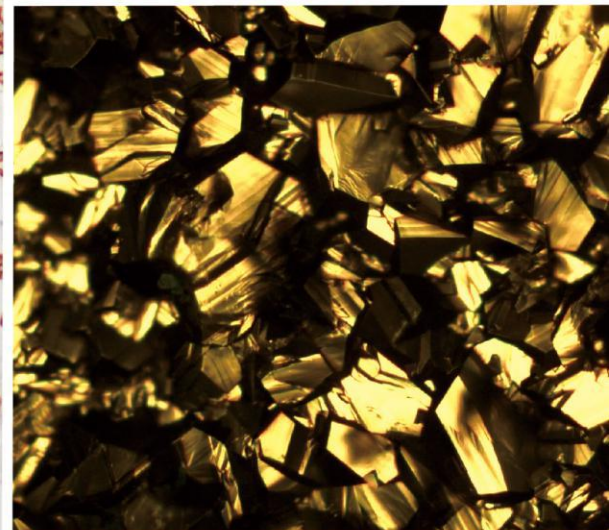
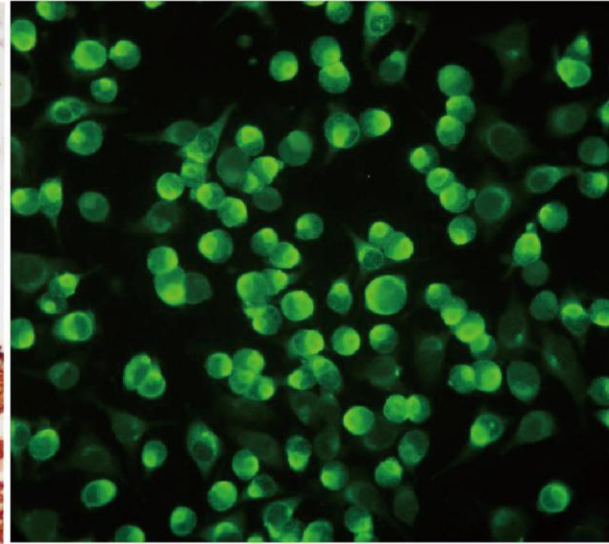
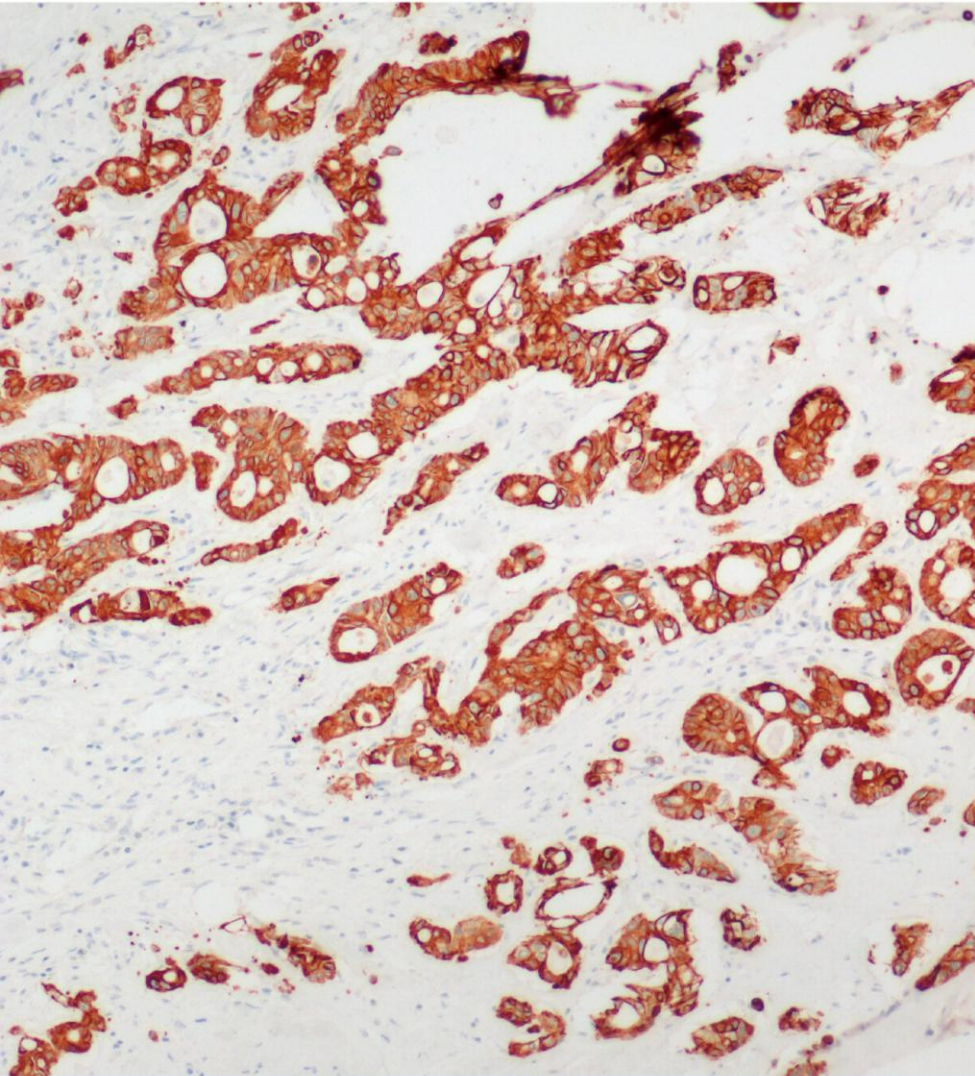


Intelligent Imaging for Great Discoveries

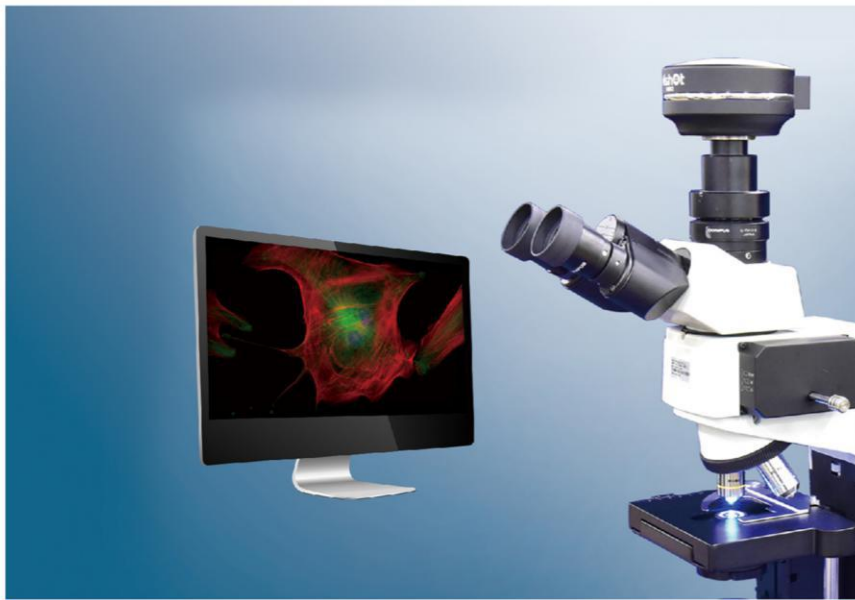


Microscope Digital Camera

- 12.5 megapixels high resolution, accuracy color reproduction
- 1 inch large area sensor, wider field of view

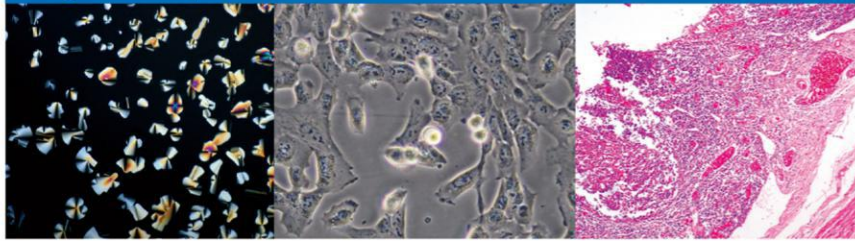
MICROSCOPY IMAGING EXPERT





Research level microscope camera

Presenting fine details accurately in high clarity, the MSX2 series camera is outstanding to medical analysis applications. Superior color reproduction is idea for diagnostic and analysis of TCT, IHC, medullary cell, etc which objects has high color requirement. objects has high color requirement.



12.5MP clarity image

Effective efficiency 12.5 megapixels to show fine details

Large area sensor Wider field of view

1 inch size sensor brings unprecedented view
Easier focus, contract and observation

Optimized image processing Better color reproduction, higer differentiation degree

Adopts latest smart imaging technology
Multiple edition enhances image edge color
Guarantee acquiring best image quality

High sensitivity

MLow noise fits to capture weak light singnal
Get vivid image even under dark field and
fluorescence observation

Rapid USB3.0 data processing

Max 57fps frame rate speed and make sure no
loss of resolution and clarity

Item	MSX2	Working mode	Progressive scan / continous output
Cooling (optional)	-15° Peltier Cooling	Trigger mode	Software
Effective resolution	12.5 MP	Exposure mode	Electronic rolling shutter
Resolution	4088*3072	A/D convert	8Bit/12Bit RAW
Sensor size	1 inch	Exposure modes	Manual/Auto/Area
Pixel size	3.1 um	White balance	Auto/One push/Area
Resolution	Frame rate	Image format	TIF, BMP, JPG
4088 × 3072	15fps	Image cache	64MB
3840 × 2160 (ROI)	15fps	Software interface	DirectShow / TWAIN
2044 × 1536 (SUM2)	57fps	OS	Windows XP 32Bit; Windows 7/8/10 32/64Bit
1920 × 1080 (SUM2+ROI)	57fps	Data port	USB3.0
1360 × 1024 (SUM3)	15fps	Power supply	USB 5V
Exposure time	41us ~ 10s	Shell size	108.5mm*106.5mm*62.5mm
Effective gain	1X ~ 32X	Surrounding needs	Working temperature:0~40°C;
Spectral response	380nm ~ 1100nm		Working humidity: 10%~90%

