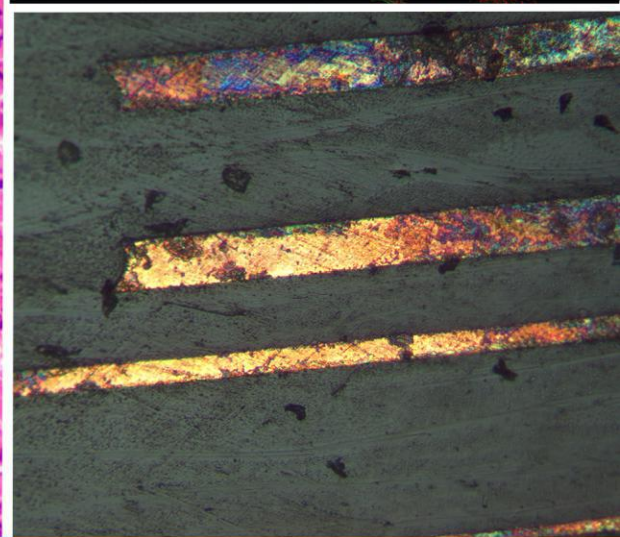
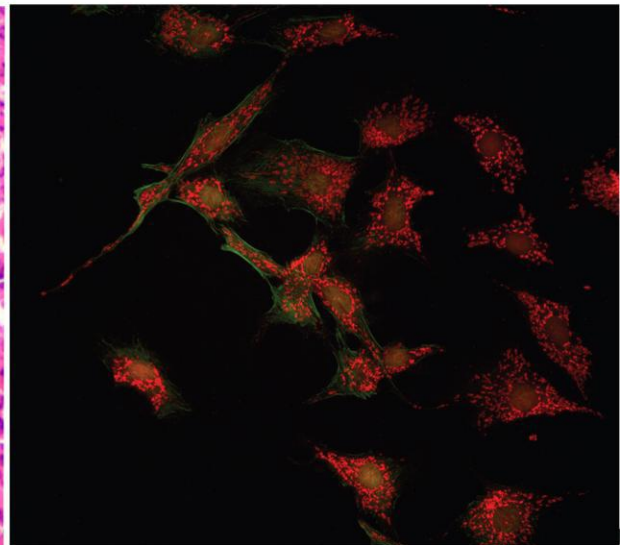
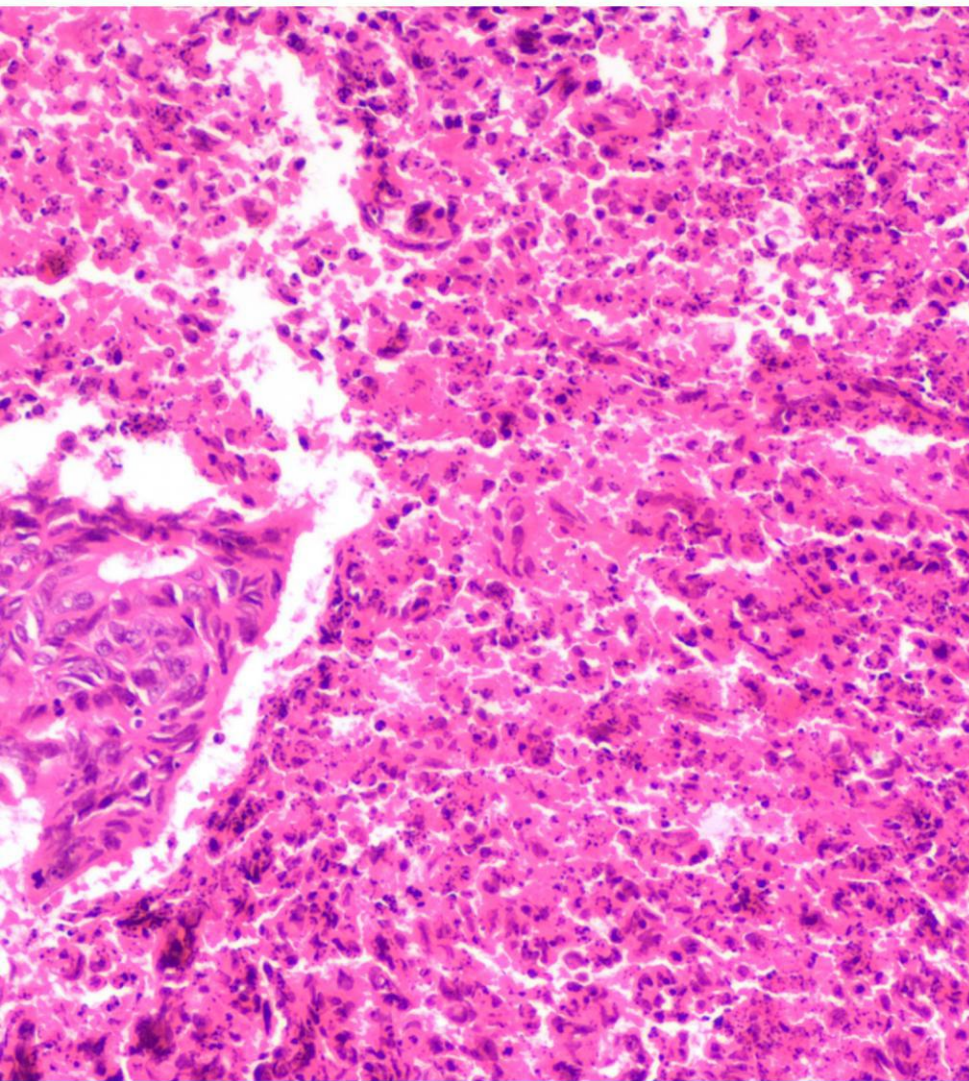


Intelligent Imaging for Great Discoveries



- ◆ 10MP high resolution
- ◆ ISP image processing sensor

MICROSCOPY IMAGING EXPERT



Microscope camera

MSX1 built-in high performance ISP (Image Signal Processor) sensor, optimize microscope imaging capture ability and highly improved camera running speed, accurate reproduce observing target fine construction and true color, it is ideal for pathology diagnose, metallurgical analysis and stereo observation.

Features:

- Outstanding color reproduction
- Fast speed 36fps



Specification

Item	MSX1	Cache	64Mb
Resolution	10MP	Exposure	Manual / Auto / Area
Sensor size	1/1.7"	WB	Auto / One push / Area
Pixel size	1.85 μ m \times 1.85 μ m	Format	TIF、BMP、JPG、RAW
Frame rate	3816 \times 2833 36fps	Software	DirectShow / TWAIN
Scanning mode	Progressive/Continuous	OS	Windows XP 32bit; Windows 7/8/10 32/64bit
Trigger	Software	Data port	USB3.0 B type, 5Gb/s
Shutter	Electronic shutter	Power	USB 5V supply
Exposure time	8 μ s - 30s	Port	C-mount
Effective gain	1x - 16x		Working temperature: 0 - 40 $^{\circ}$ C;
Spectral range	380 - 650nm		Working humidity: 10% - 90%RH
A/D convert	12bit	Size	\varnothing 76mm \times 62mm

Guangzhou Micro-shot Optical Technology Co. Ltd

Company add: Tianhe, Guangzhou City, China / Tel: 020-38250606/38262481 /

WEB: <http://www.m-shot.com> / Email: sales@m-shot.com / Tel: 400-880-1910

