

Microscope camera MDX10

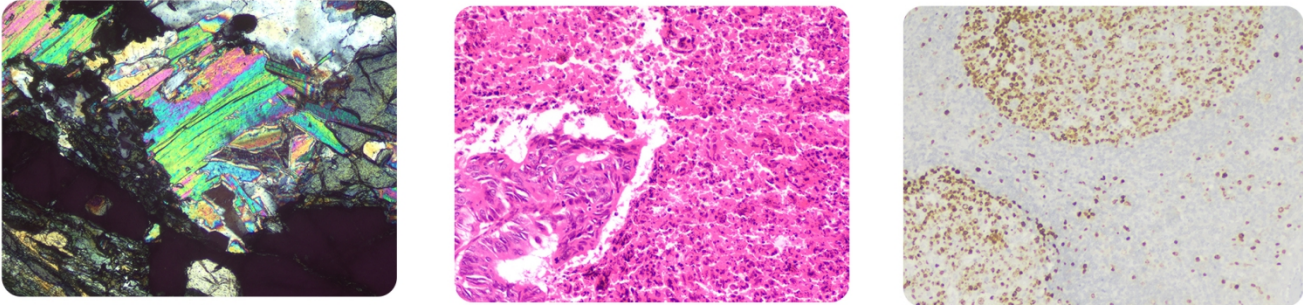
MDX10 microscope digital camera adopts high-performance imaging sensor, optimizes the microscopic shooting scene, accurately restores the structure and true color of the sample, USB3.0 data transmission interface, runs smoothly at 20 megapixels full resolution, greatly improves the collection efficiency, which is an ideal tool for applications such as pathological diagnosis, metallographic analysis and stereo observation.

Feature:

- 20.0 megapixels high-definition camera
- High speed and high sensitivity
- 22 frames at full resolution
- Specializing in microscopic imaging depth optimization



Performance image



Specification

Model	MDX10		A/D Convention	12bit
Resolution	20.0 megapixels		Image Cache	128Mb
Sensor size	1 inch		Exposure mode	Manual/Auto/Area exposure
Pixel size	2.4μm×2.4μm		White balance	Manual/One push/Area
Resolution & Frame rate	Resolution	Frame rate	Image format	TIF、BMP、JPG、RAW
	5480×3648	22 FPS	Software data	DirectShow / TWAIN
	2736×1824	22 FPS	Operating OS	Windows XP 32bit; Windows 7/8/10 32/64bit;
	Any size ROI		Data interface	USB3.0 5Gbps B type interface
Scanning mode	Progressive scan/continuous output		Adapter	C-mount adapter
Shutter type	Electronic rolling		Power supply	USB 5V supply
Exposure time	12μs-10s		Surrounding	0-50°C; Humidity: 10%~90%RH (No condensation)
Effective gain	1-16X		Size	Ø76×62mm
Spectral response	380-650nm			

# Microscope camera MDX10

