

Mshot 明美



reddot winner 2024

# Mshot Live-Cell Imaging System

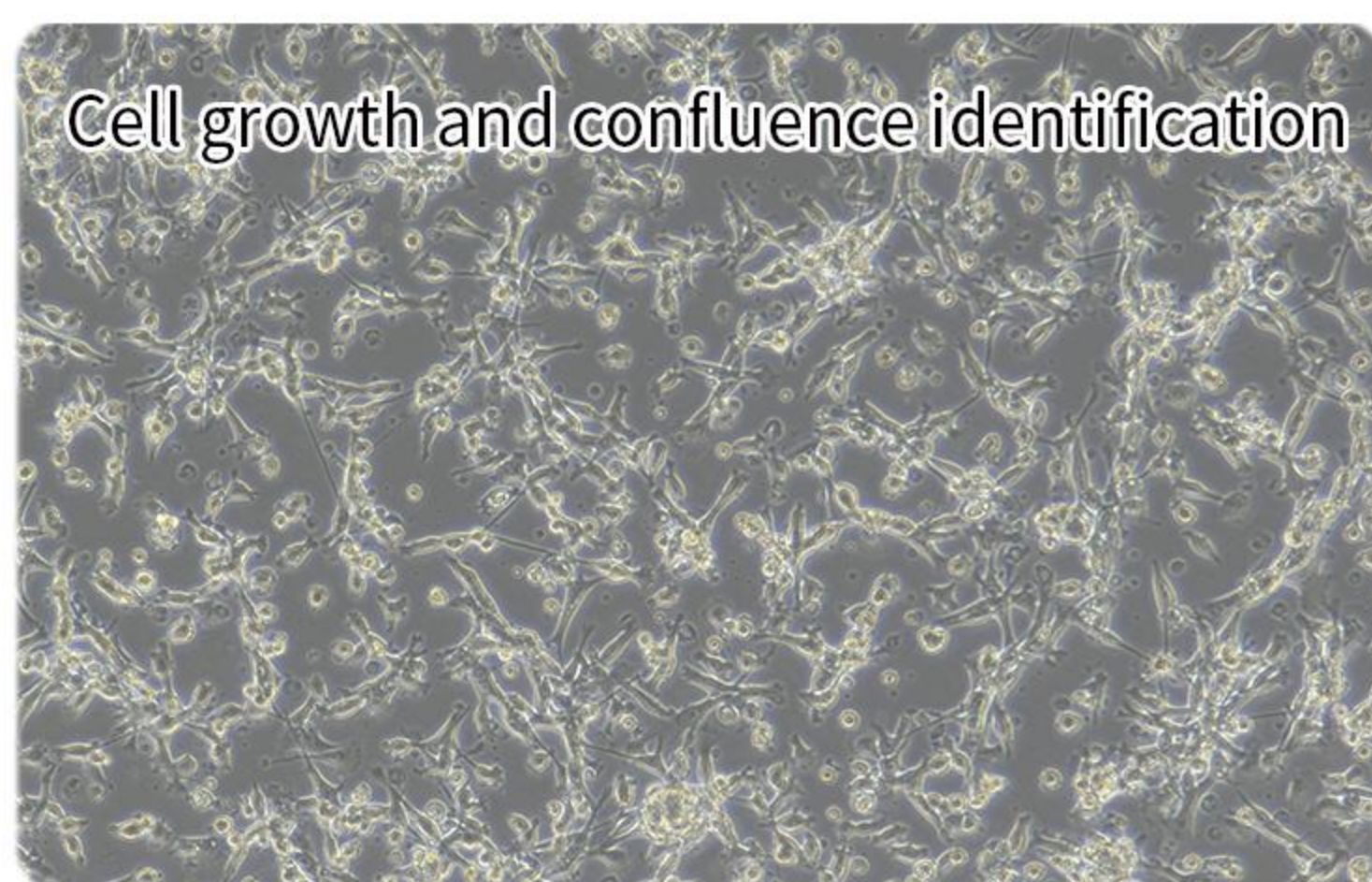
MCS21/MCS22

combine brightfield, phase contrast and fluorescence imaging, equipped with blue and green fluorescence channels, suitable for monitoring cell transfection and cell viability scenes

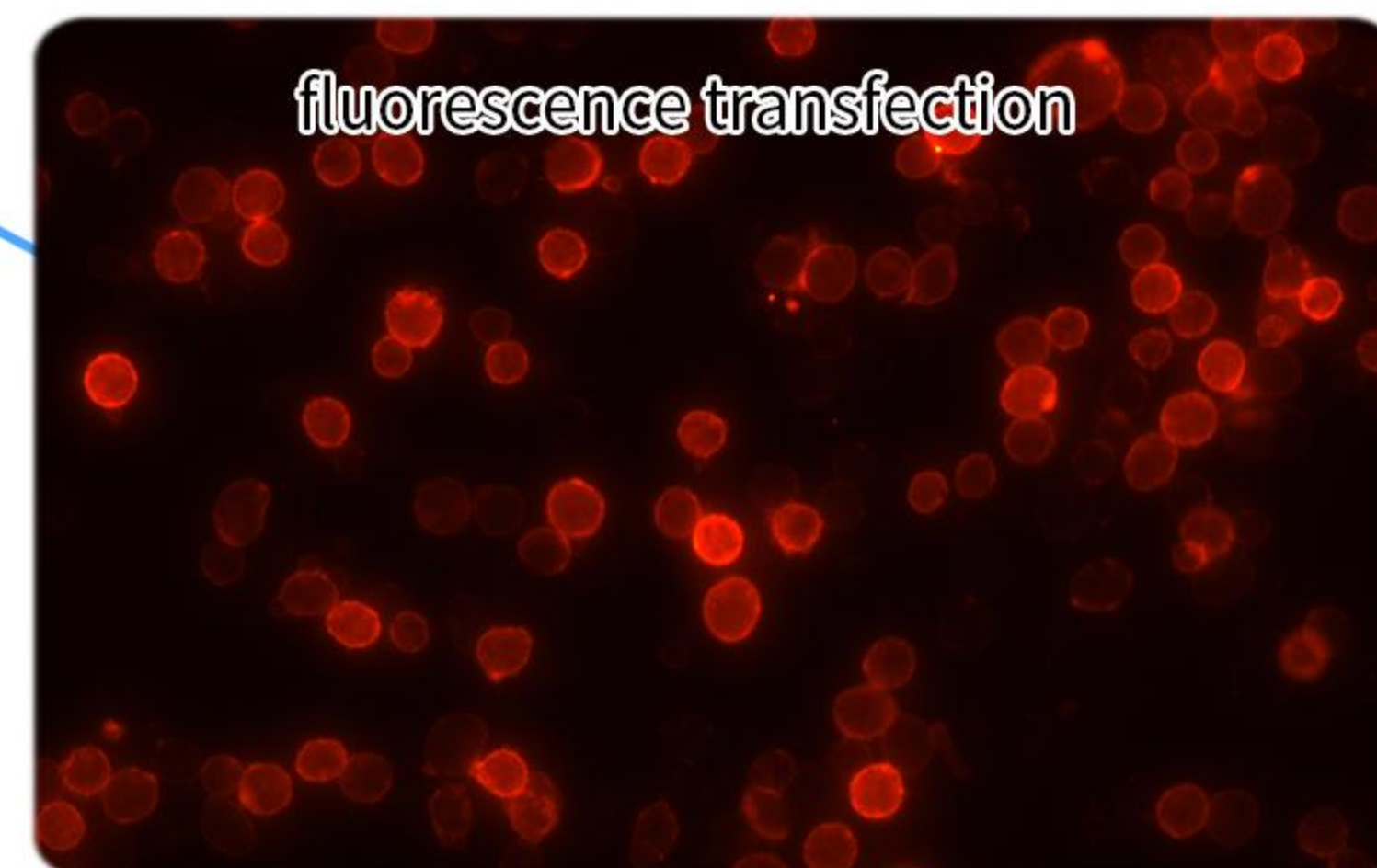
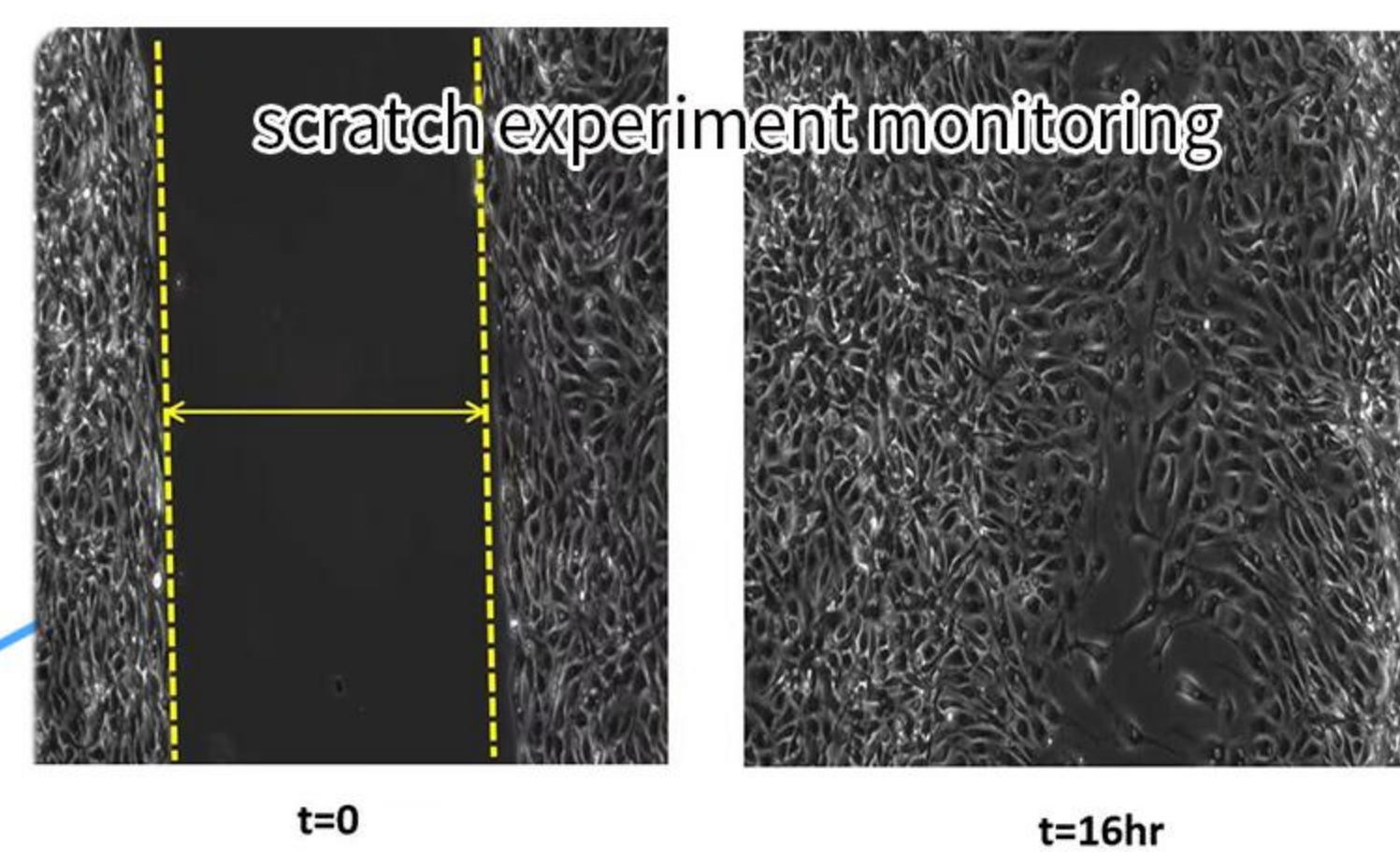
MCS11

The 625nm red LED light source can reduce cell whitening, suitable for cell observation, confluence analysis, scratches and other scenarios.

Compatible with automated brightfield/fluorescence imaging in incubator, MSHOT MCS11&MCS21 &MCS22 Live-Cell Imaging System allows for long-term dynamic monitoring and analysis of live cells. With easy-to-use software and an AI intelligent analysis system, it can timely help you visualize and analyze sample morphology and behavior changes, and can also realize cell culture progress reminders.



Applications



Micro-shot Technology Limited

Rm 506, Lobby A, Vanke Cloud, 1933 Huaguan Road, Tianhe District, Guangzhou, China  
 Tel: 020-38250606  
 Email: sales@m-shot.com  
 Website: www.m-shot.com



Intelligent cell culture  
 Assist in improving cell quality

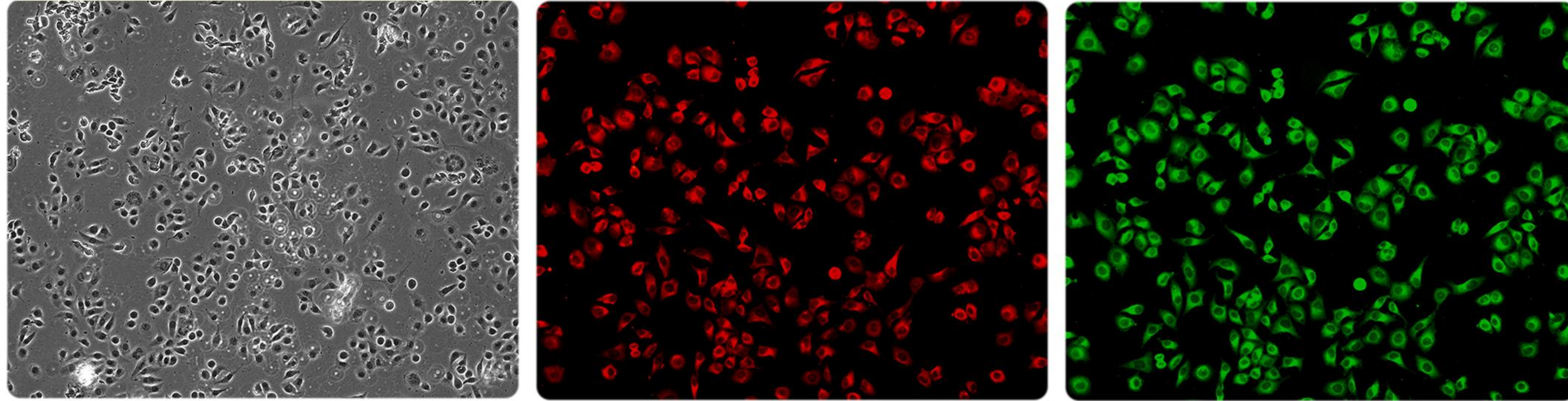


## Features

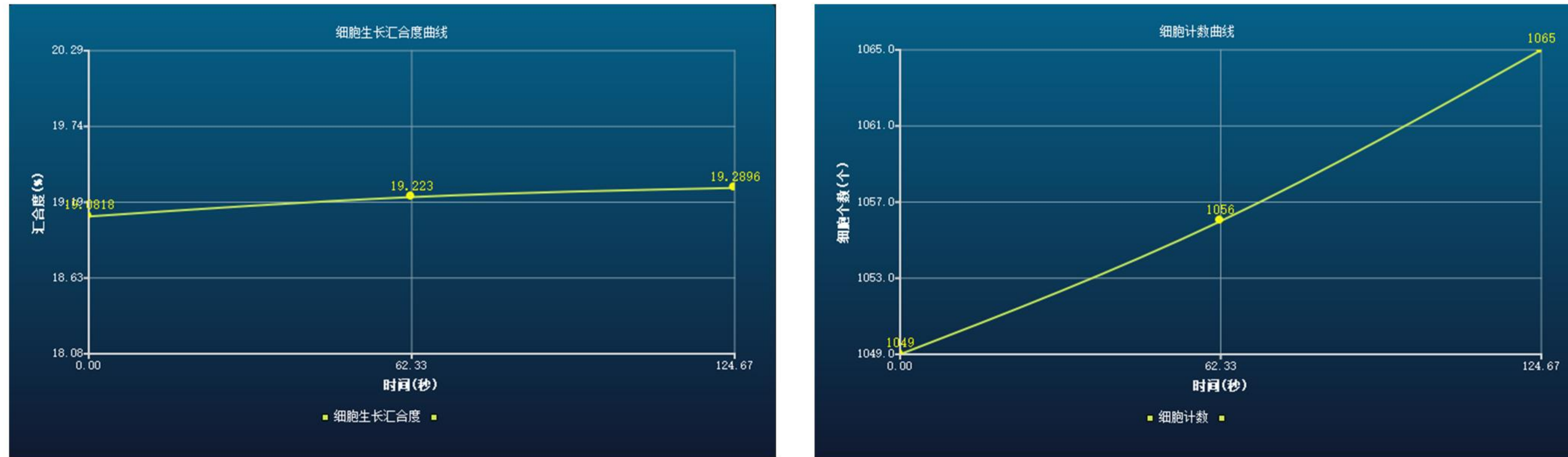


The MCS11/MCS21/MCS22 Live-Cell Imaging System greatly simplifies your workflow through automated scheduled observation, analysis and reporting, you can remotely monitor the progress of cell culture without entering the clean room or opening the incubator, greatly improving work efficiency and avoiding the risk of disturbing growth and contaminating samples.

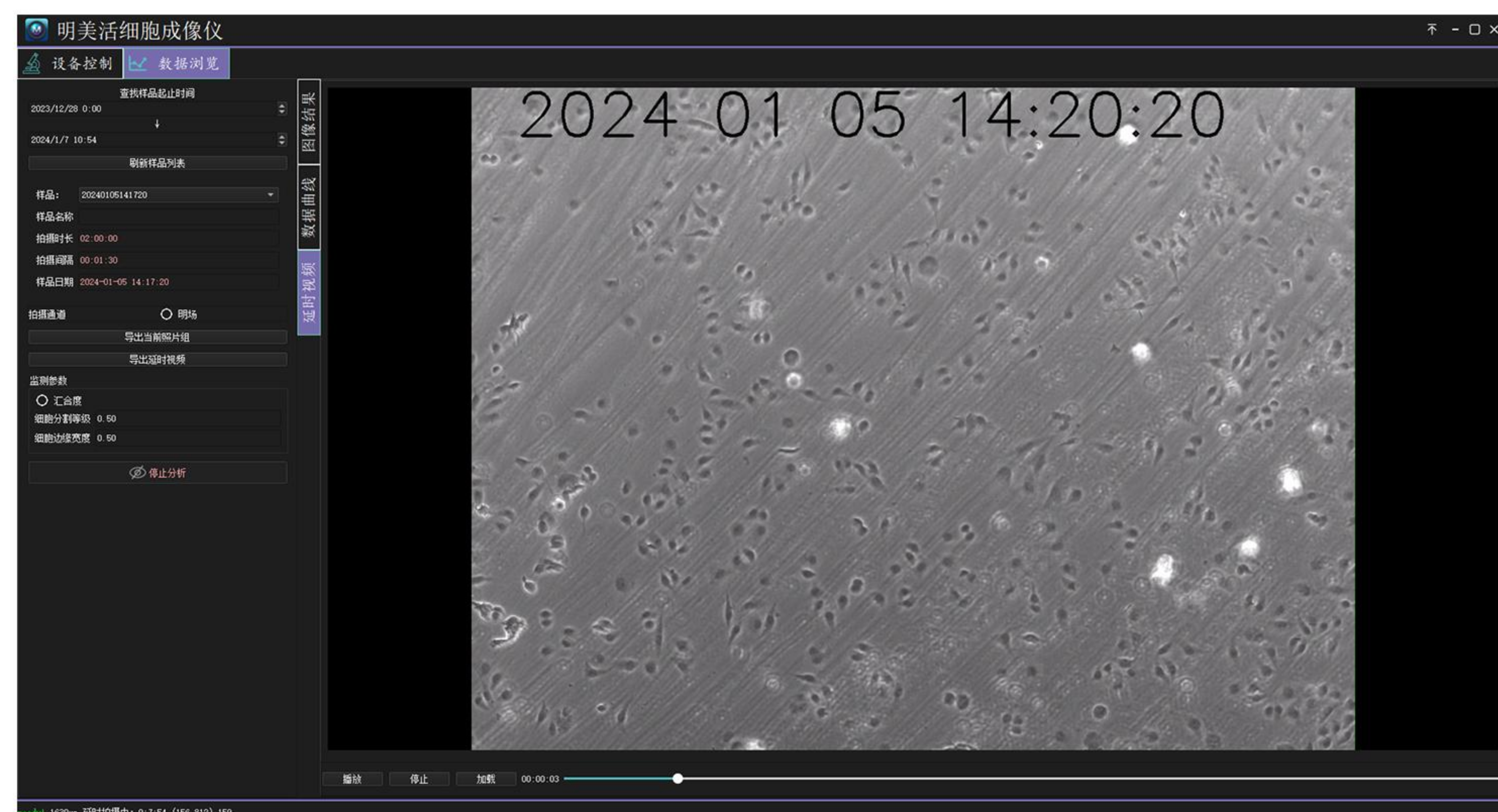
## High-quality phase contrast, fluorescence imaging



## Confluence analysis/cell counting



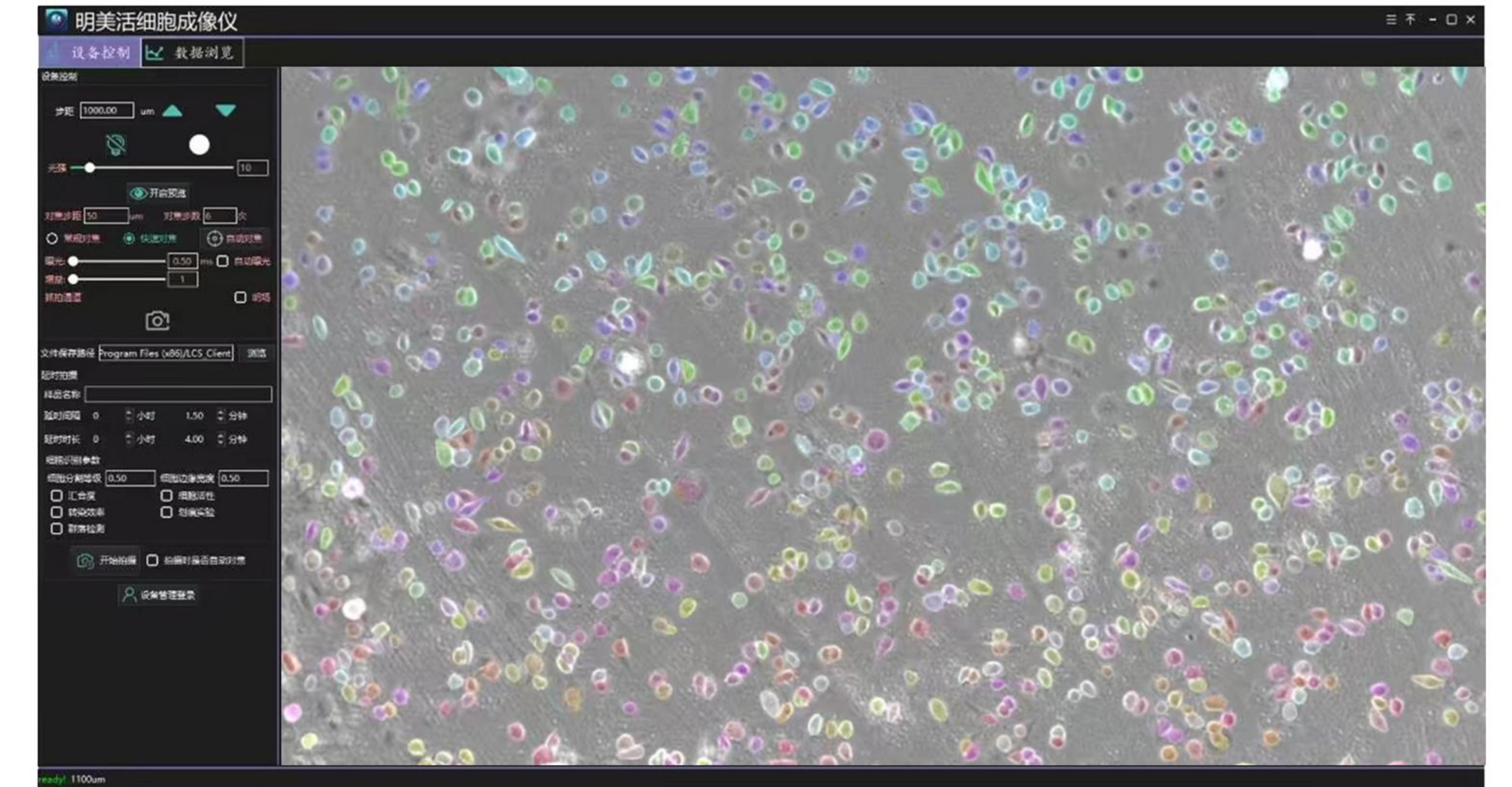
## Time-lapse recording



## Email reminder and remote control



Email reminder



## Specifications

Live-Cell Imaging System			
	MCS11	MCS21	MCS22
Bright field observation	Transmitted phase contrast illumination, WD: 70mm Long life low phototoxicity LED light source: 625nm		
Fluorescence observation	No such function		
Objective lens	Single objective lens: 4X/10X/20X objective lens optional	Single objective lens: 4X/10X/20X objective lens optional	Dual objective lens: electric switching 4X/10X/20X objective lens optional
Stage	Flat stage, manual movement		
Dimensions	Width*length*height: 143mm*232mm*182mm		Width*length*height: 214mm*260mm*182mm
Z axis	Electric focus, auto focus		
Camera	5-megapixel brightfield camera		High-speed and high-sensitivity fluorescence camera 5 million pixels Chip size: 2/3 inch; Frame rate: 40fps
Software	Adopts C/S architecture and supports remote control, including lighting control, camera recording, photography, video recording, time-lapse photography, cell counting, cell confluency, scratch experiment; external network control, email reminder		
Data transmission/power supply	USB data cable + DC power supply cable		
working environment	5-42, 5-95%RH		

## Dimension

