


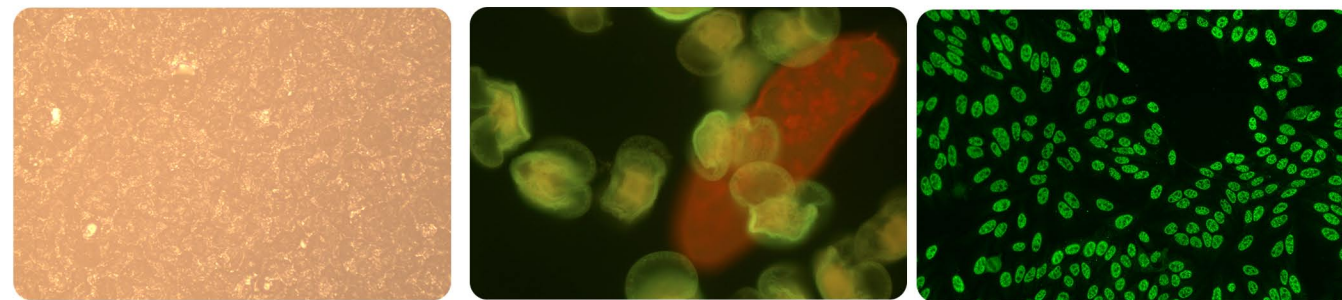


Single channel	It is optional of excitation bands of blue / royal blue / green/ UV	
Dual-channels	It is blue and green dual channels in one filter	
Reflected white	It provides reflected white LED lighting ability to CX33 and CX43	

Images



Specification

Single-channel (B/G/U are optional)	Single channel fluorescence	Lamp power: 3W
	B: 460-490nm / RB: 420-480nm	
	G: 510-550nm;	
	UV: 360-390nm	
Dual-channels	Dual-channels fluorescence	Lamp power: 5W
	B: 450-490nm / 555-590nm	
	G: 500-540nm / 600-665nm	
Reflected white	Lamp power 3W	
	White light color temperature 4000K	

# LED fluorescence attachment Insert-in type

Works for CX33/CX43

