

MSX11-C is a 21.0 megapixels super high resolution camera, its 4/3 inch large size sensor and ISP hardware imaging process sensor and peltier cooling to reduce noise.

Features:

- Superior noise control.
- Outstanding light sensitivity is good to capture weak light.
- Sharp tiny details and real color reproduction.
- Efficient data processing, the highest speed is 21fps.

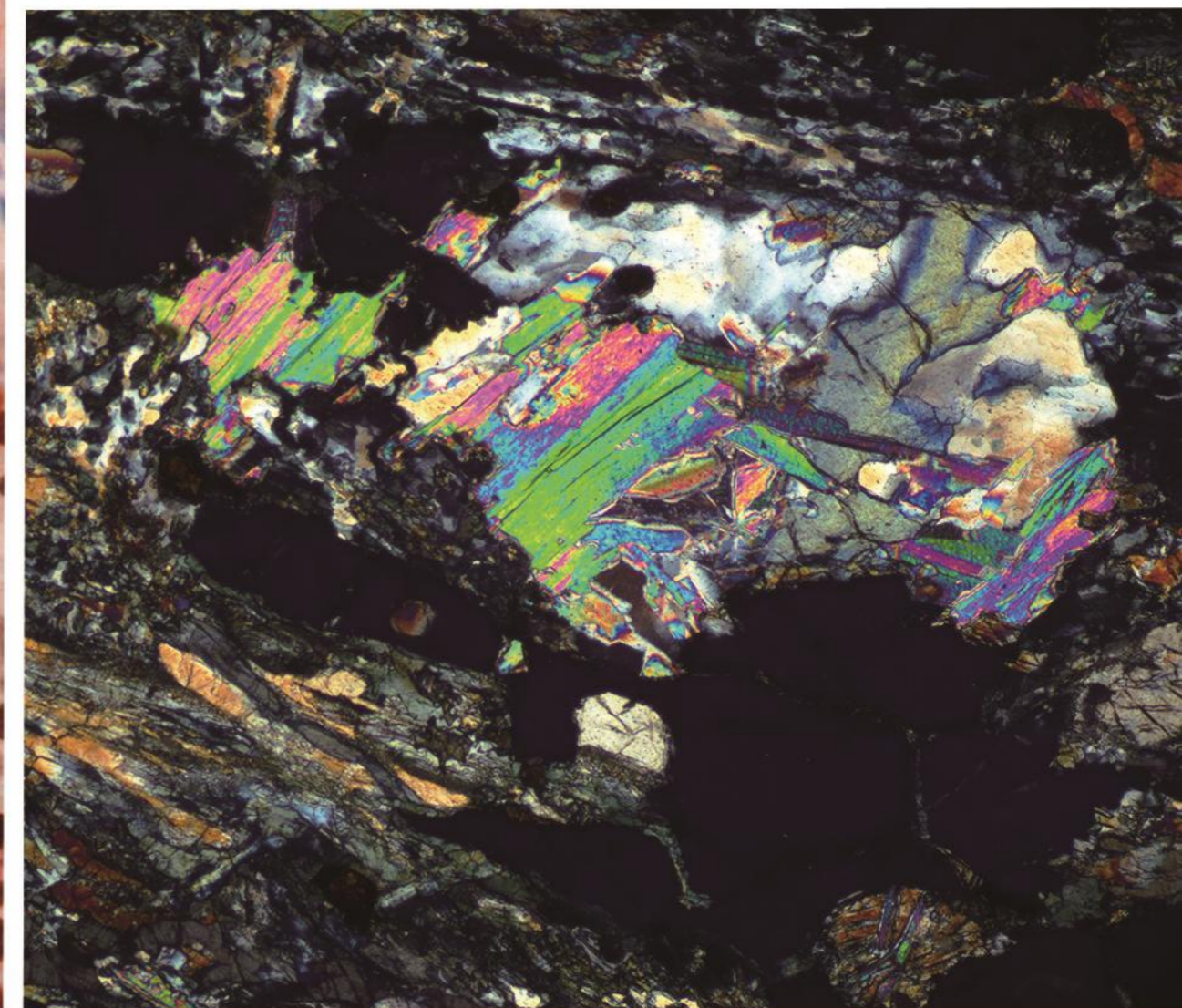
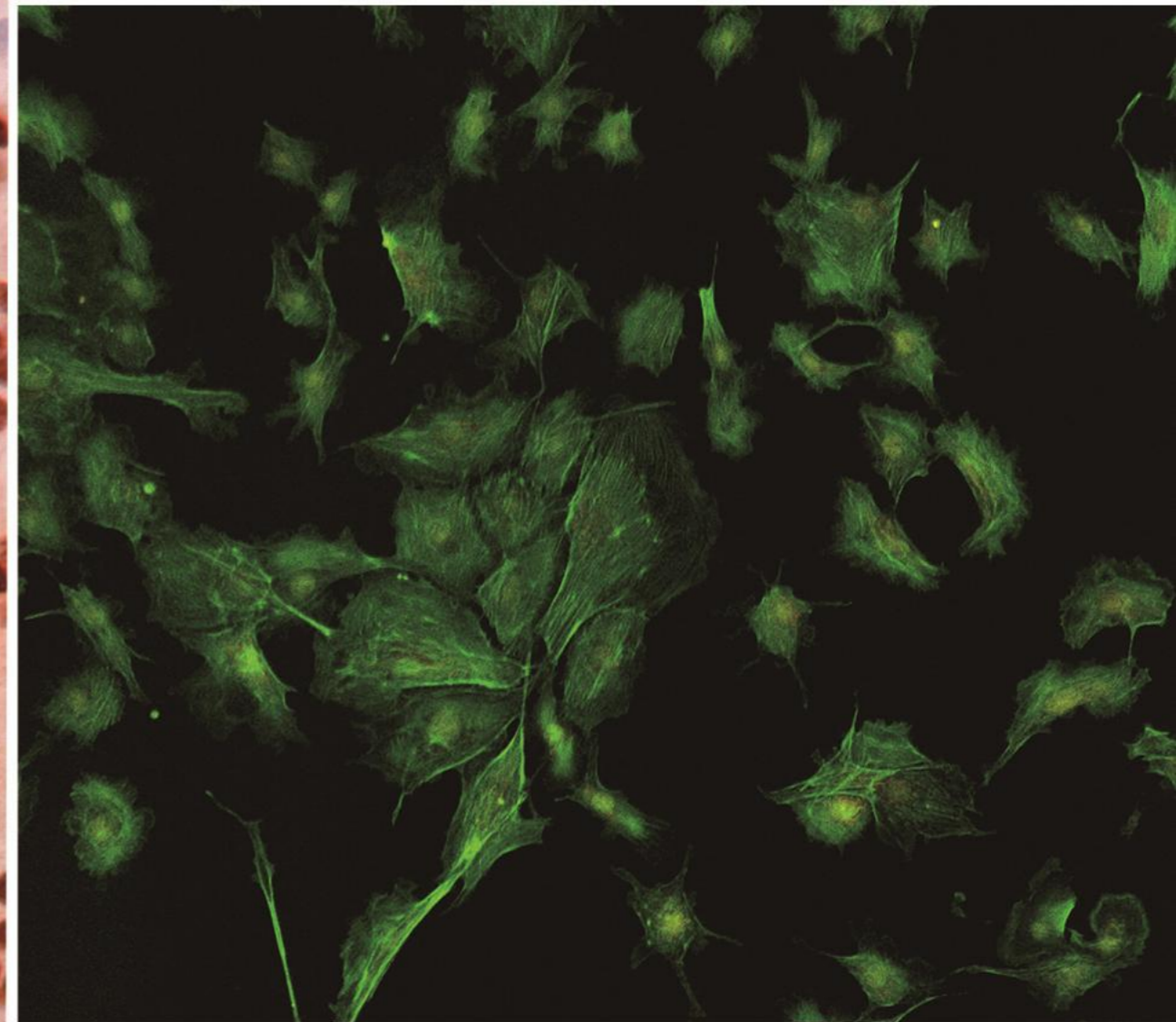
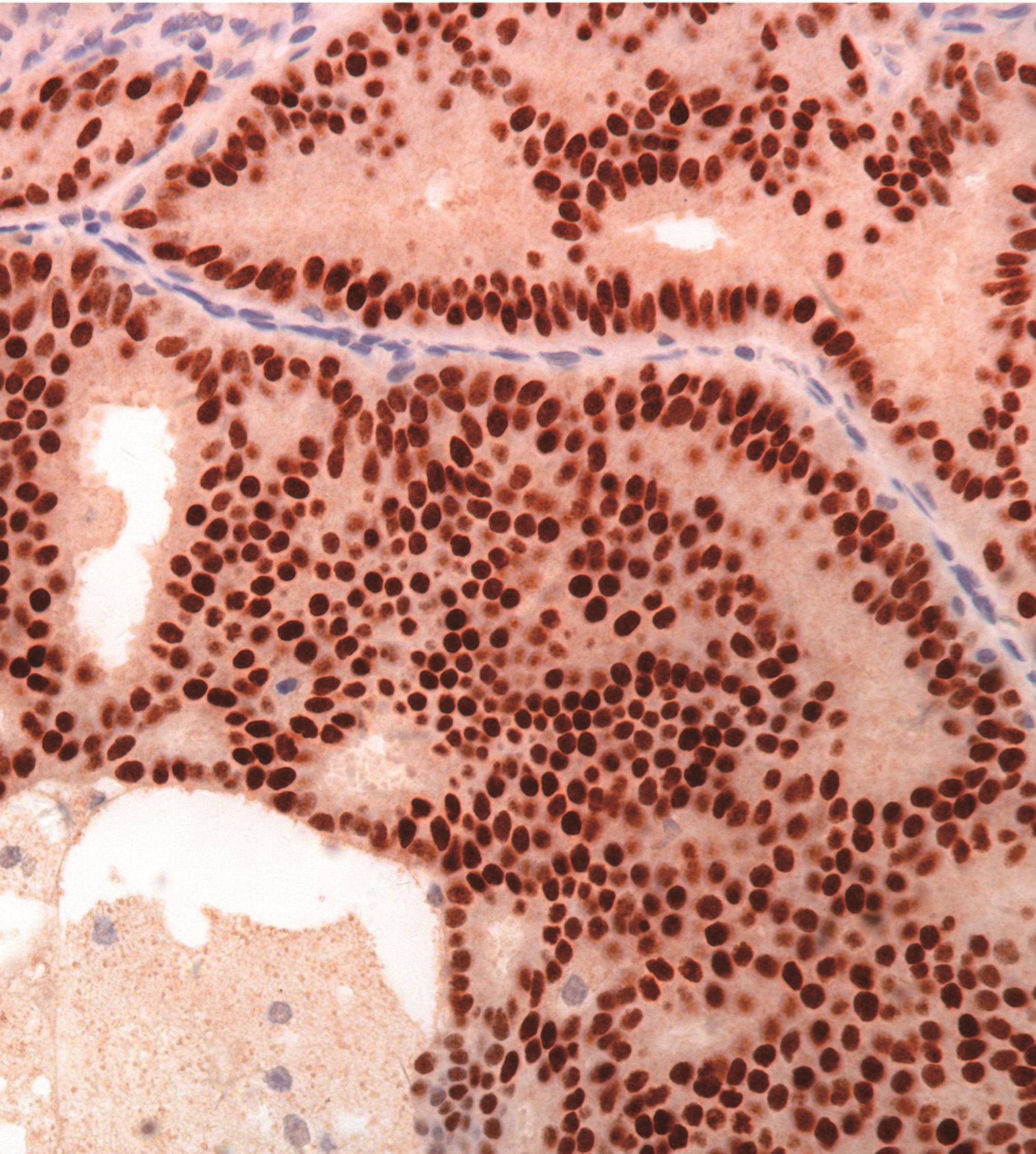


Specification

Product model	MSX11-C	Spectral response	380nm - 650nm
Effective resolution	21.0 mgepixels	Cooling	Peltier cooling, below ambient temperature 15° C
Sensor size	4/3"	A/D convert	12Bit
Pixel size	3.3μm×3.3μm	Image cache	128MB
Frame rate	5280×3956 21fps	Exposure mode	Manual / Auto / Zone
	3840×2160 (UHD) 21fps	White balance	Auto One-push / Zone
	2640×1978 (sum2) 21fps	Image format	TIF, BMP, JPG, RAW
	2640×1730 (skip) 95fps	Software port	DirectShow / TWAIN
	Any size of ROI	Operating OS	Windows XP 32bit, Windows 7/8/10 32/64bit
Scanning mode	Progress / Continous	Data port	USB3.0 B type, 5Gb/s
Trigger mode	Software trigger	Camera port	C-mount adpater
Shutter	Electrical shutter	Power supply	USB 5V power supply
Exposure time	12μs - 30s	Working surrounding	Temprature 0 - 40°C, humidity 10% - 90%RH
Effective gain	1 - 16x	Shell size	Ø108.5mm×106.5mm×62.5mm



Intelligent Imaging for Great Discoveries



Microscope Camera

- 21.0 megapixels high resolution microscope camera
- 4/3 inch large side, wider field of view

