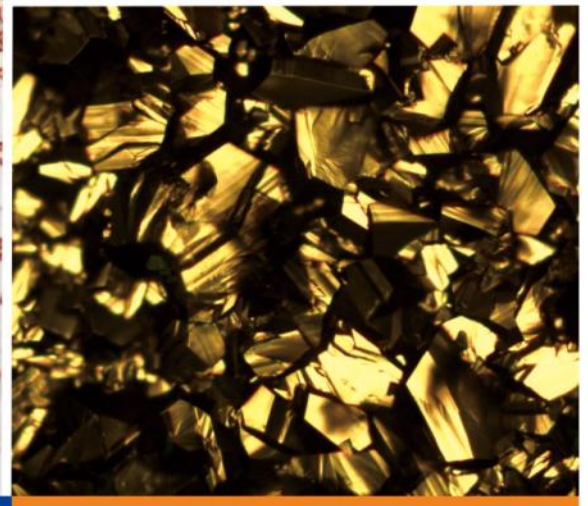
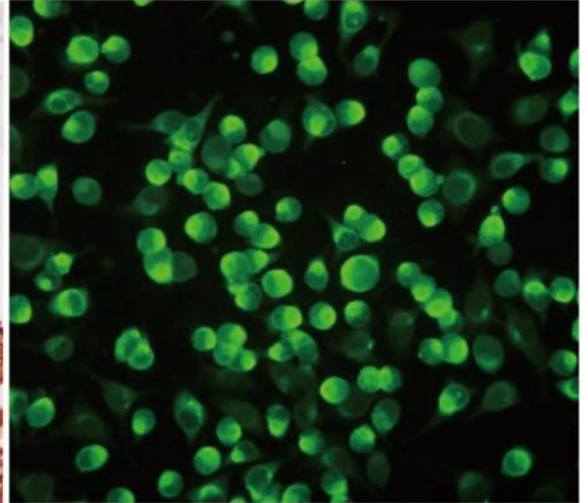
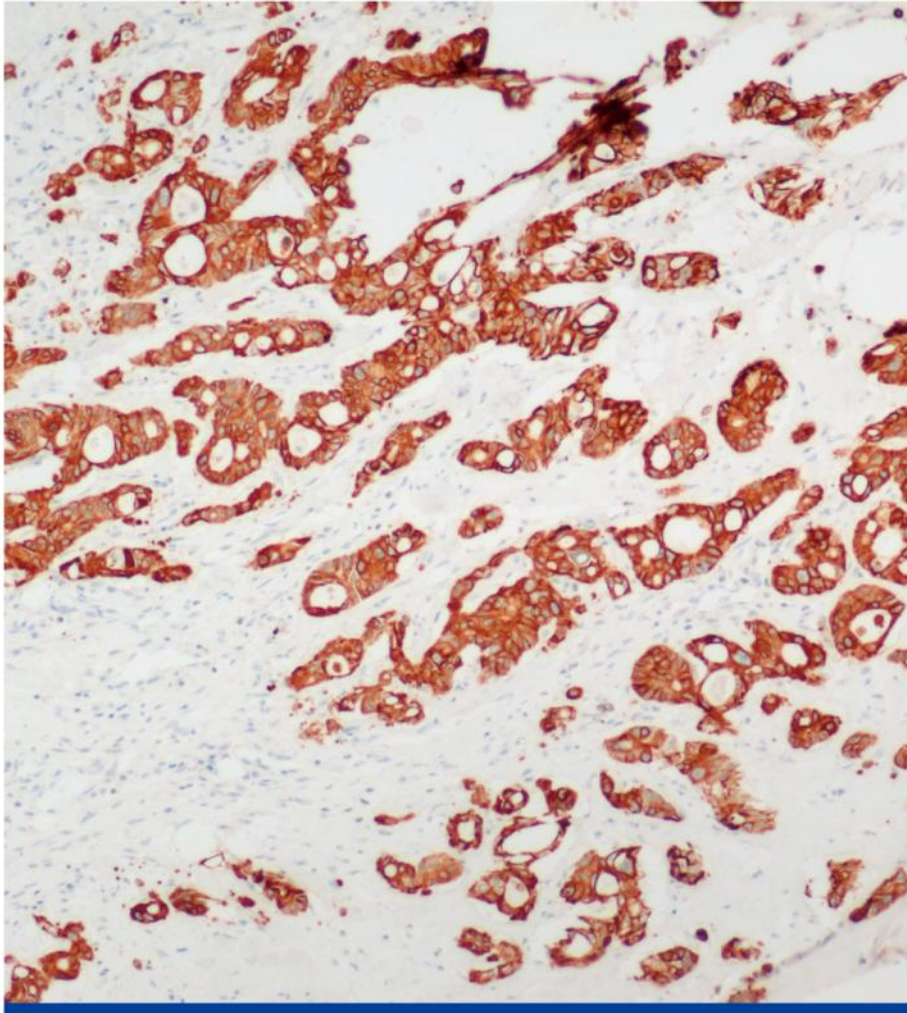


Intelligent Imaging for Great Discoveries



## Digital camera

- resolution of 12.5 megapixels, accurate color reproduction
- The 1-inch large-format chip has a wider field of view

MICROSCOPY IMAGING EXPERT



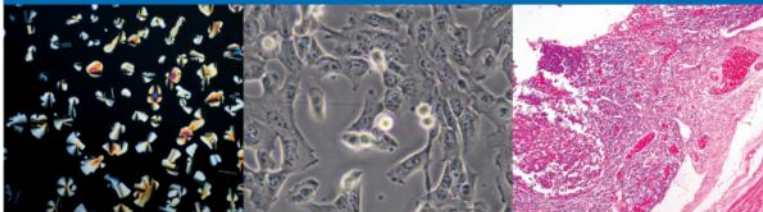




# MSX2-C

## Research-grade digital camera

Real color reproduction and high-definition make MSX2-C a leader in the medical industry. Its excellent color performance makes it an ideal tool for color-based diagnostic fields such as liquid-based cell analysis, immunohistochemistry, and bone marrow cell analysis.



# Mshot 明美

**12.5 megapixels,  
super clear image**

Truly effective 12.5 million physical pixels to reproduce perfect details

**large sensor size  
super wide of view**

The 1-inch large sensor brings an unprecedented wide field of view Make it easy to see, compare, and focus

**Optimize image algorithms  
Real color reproduction**

Multi-optimized color matrix and image edge enhancement .The best image quality is guaranteed at all times

**High sensitivity  
Low noise fit low-light signal**

High sensitivity and low noise, enabling vivid images even in darkfield and fluorescence observation scenarios

**High-speed USB3.0 transmission**

USB3.0 data port and 64MB cache to store transferring data makes the camera working smooth with high resolution imaging.

Item	MSX2-C	
Effective pixels	12.5MP	
Sensor size	1"	
Pixels Size	3.1μm × 3.1μm	
Frame rate	Resolution	Frame
	4088 × 3072	15 FPS
	3840 × 2160	15 FPS
	2040 × 1536(SUM2)	57 FPS
	1920 × 1080(SUM2)	57 FPS
Frame rate	1360 × 1024(SUM3)	15 FPS
	Any size ROI	
	Progressive scanning / continuous output	
Scanning Mode	Progressive scanning / continuous output	
Shutter	Electronic shutter	
Exposure time	41μs - 10s	
Effective gain	1 - 32x	
Spectral Response	380 - 1100nm	
A/D conversion	12bit	
Image Cache	64Mb	
Trigger mode	Software trigger	
Cooling function	Peltier cooling, below permissible ambient temperature 15°C	
Exposure	Manual/ AUTO/area exposure	
White balance	Manual/One push push/Area	
Image format	TIF, BMP, JPG, RAW	
Software Interface	DirectShow / TWAIN	
Software development	Support SDK	
Operating system	Windows XP 32bit; Windows 7/8/10 32/64bit; Linux	
Data interface	USB3.0, 5Gb/s	
Camera interface	C-mount adapter	
Power supply	USB 5V	
Operating environment	Temp: 0-50°C; Humidity: 10%-90%RH (No condensation)	
External dimension	108.5mm × 106.5mm × 62.5mm	

## MICRO-SHOT TECHNOLOGY LIMITED

Rm 506, Lobby A, Vanke Cloud, 1933 Huaguan Road, Guangzhou, China  
 WEBSITE: [www.m-shot.com](http://www.m-shot.com) TEL: +86-20-38262481 E-mail: [sales@mshot.com](mailto:sales@mshot.com)

