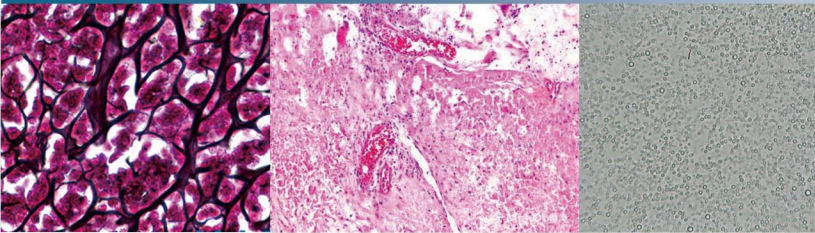




**ML11**



**Mshot**

**ML11 Features:**

view is wide and clear.  
 • 3W LED, Pre-set lamp center, brightness continues adjustable.

Entry level microscope

optional for using at outdoor.

**Specification**

Item	Specification
Eyepiece	WF10X/18 (WF10X/20 is optional)
Head	30°inclination trinocular, P.D. 50mm-75mm, single diopter adjustable, fix light division R:T:80:20
	30°inclination binocular, P.D. 50mm - 75mm, single type diopter adjustable (optional)
Objectives	Achromatic objective 4X/0.10, W.D.: 37.5mm (Infinity plan achromatic objectives are optional)
	Achromatic objective 10X/0.25,W.D: 6.55mm
	Achromatic objective 40X/0.65,W.D: 0.669mm
	Achromatic objective 100X/1.25, W.D: 0.198mm
Nosepiece	Quadruple nosepiece with inward tilt
Focusing	155mmx142mm double layer mechanical, moving range 76mmX50mm , accuracy 0.1mm
Stage	Low position hand wheel coaxial coarse and fine adjustment with limit stopper and lock device, stage height movement (coarse movement stroke: 25mm),fine focusing accuracy 0.002mm
Transmitted illumination	3W LED, Pre-set lamp center, brightness continues adjustable
	Abbey condenser,N.A.1.25, with changeable aperture diaphragm
	Filters: blue, yellow and green
Camera port	1XC
Power line	External set wide voltage power adapter, input 100V-240V-AC50/60HZ, output DC12V2A

**Mshot**

**ML11**

**Biological Microscope**



Guangzhou Micro-shot Optical Technology Co. Ltd

Add: Room 506 Vanke Cloud Building A / 1933 Huaguan Road Guangzhou / China  
 WEB:www.m-shot.com / sales@mshot.com / TEL:0086-20-38262481

